

2023 Official Guide of the Rock County Tourism Council

ROCK COUNTY

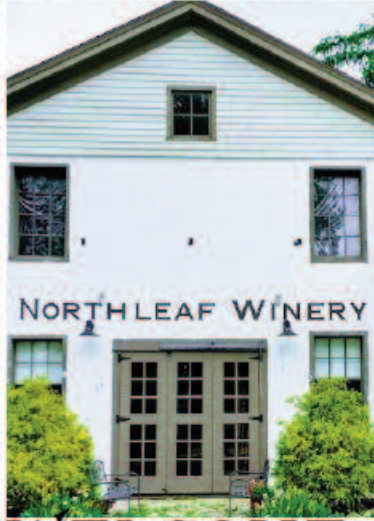
Wisconsin's Front Porch

Beloit
Edgerton
Evansville
Janesville
Milton
Town of Beloit
Clinton
Cooksville
Footville
Newville
Orfordville



Northleaf Winery

WINERY, TAPROOM, EVENT SPACE & GUEST HOUSE



WELCOME!



MON-SAT 11-7 MUSIC ON FRI @ 7 SUN 11-5

Goodrich Antiques & Vintage Uniques



*Guest Inn
Now Open*

- Furniture
- Collectibles
- Unique Home Decor

HOURS
Fri. & Sat. 10 to 5
Sun. 12 to 5

608-868-3651 742E. Madison Ave. Milton, WI 53563

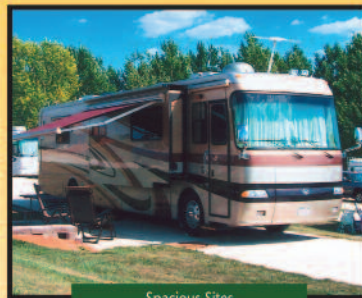
MILTON KOA Family Campground

Milton KOA has been chosen one of the nation's cleanest Campgrounds.

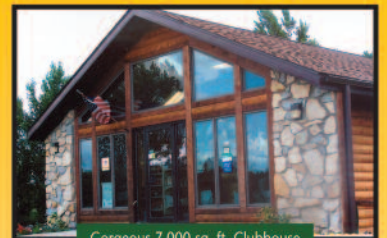
Satisfaction Guaranteed

We are so sure you will love our campground that if upon arrival you are not completely satisfied you may leave within one hour and receive a full refund.

Big Rig Friendly!



Spacious Sites



Gorgeous 7,000 sq. ft. Clubhouse



Sparkling Clean Pool

- 70'-100' Drive thru sites with 50 AMP and sewer
- 4 Nite Packages
- Immaculate Bathrooms
- Playgrounds

For Reservations 800-469-5515

Amazing Grill & Accessory Selection

ACE Hardware

"Everything for your home, inside and out"

- 18,000 sq. ft. of quality hardware & paint
- Chair rental • Propane Tanks Filled

Open Mon-Fri 8 - 7
Sat 8 - 5, Sun 9 - 3

430 S. John Paul Rd. Milton

868-2843



www.hiddenvalleymilton.com

872 East Highway 59
Milton, Wisconsin 53563



Rock County, Wisconsin's Front Porch, is a centrally located relaxing destination in the upper Midwest.

Experience Rock County's History, Culture, Activities & Events

Attractions, Things To Do, Entertainment	4-7
Events	8-11
Recreation and Parks	12-16
Rural Rustic Roads	13
Rock County Trail Map	16
Rock County Map	18-19
Rock County Communities	
• Orfordville, Town of Beloit	17
• Clinton, Cooksville	17
• Beloit	20-22
• Evansville	23
• Edgerton / Newville	24-25
• Janesville	26-29
• Milton	30-32
Accommodations	33
Living and Working in Rock County	33
Fall Flavors	34
Spring & Winter Happenings	35



VISIT BELOIT & THEIR TOURISM PARTNERS

Rock County boasts a plethora of dining establishments suited for any palate.

Cover photo: The Milton House served as an underground railroad more than 160 years ago.

No part of this publication may be reprinted or otherwise reproduced without written permission of Guide Publishing Group and the Rock County Tourism Council. The **Rock County Guide** is published annually by Guide Publishing Group in cooperation with The Rock County Tourism Council. Every effort is made to make the **Rock County Guide** as accurate as possible. **As information is subject to change without notice, we encourage the reader to verify times, dates and other information contained in this publication.** For advertising rates please direct inquiries to: hackbarthdesign@gmail.com or 608-436-3153.



Break par at any of thirteen Rock County scenic golf courses.

For up-to-date information about Rock County, click on community pages, ads, maps, and photos to access websites.

Historic Attractions

Step into the past at these sites throughout Rock County that preserve our heritage. In 1836, Rock County was officially established, named for the big rock jutting out into the Rock River in what today is Monterey Park in Janesville. Native Americans and early settlers from New England and Europe shaped the area's history which is detailed in the many historic sites and museums throughout the county. The following sites welcome you, but please call ahead to arrange a large group tour.

Albion Academy Historical Museum

Albion Rd., at Hwy 51 and I-90, Edgerton 608-884-8186 June-Aug., Sun. 1-4 pm or by appt. Founded in 1853, this was the first co-educational high school in Wisconsin. Exhibits include a room dedicated to the author Sterling North.

10 South

10 S. High St., Janesville
Janesville's Armory, built in 1930, was used during WWII by the 192nd Tank Battalion. Listed on the National Register of Historic Places, the structure has been renovated into a wedding, corporate, and social events venue.



JAC/VB

Authentic Log Cabin - Robert O. Cooke Arboretum

The Hornby Log Cabin located at the scenic Robert O. Cooke Arboretum was built in the 1850s near Liberty Pole, WI (Vernon County). The cabin was meticulously deconstructed, moved to Janesville, and carefully rebuilt. Just in front of the cabin door is a large rock that served as a cornerstone on the original log cabin site. It seems that one corner of the cabin needed shoring, so the stone was used to prop the corner of the cabin.

Beckman Mill

11600 S County Road H, Beloit 608-751-1551 www.beckmanmill.org
Open May-Oct, Saturday-Sunday 1-4 pm
Built in 1868 and listed on the National Register of Historic Places, Beckman Mill is one of Wisconsin's only restored, working grist mills. Call the facility for tours.

VISIT BELOIT & THEIR TOURISM PARTNERS



Beloit College

700 College St., Beloit 608-363-2000 www.beloit.edu Established in 1846, Beloit College is Wisconsin's oldest college in continuous service. See historic Native American effigy mounds.

Beloit Historical Society/Lincoln Center

845 Hackett St., Beloit 608-365-7835 www.beloithistoricalsociety.com
Tuesday-Thursday Noon-4 pm
Visit the changing exhibits dedicated to Beloit history from sports heroes to veterans.

Beloit's Near East Side Historic District

Take a stroll along the tree-lined streets and view the beautifully preserved homes in the Near East Side Historic District. The district is on the National Register of Historic Places and was platted in 1837 by the New England Emigrating Company which originated in Colebrook, New Hampshire. Walking guides are available at www.beloithistoricdistricts.org.

Clay Pit Heritage Park

205 W. Lawton St., Edgerton 608-884-4408
Home to a fully restored 1800's Log Cabin and Site of Edgerton's Heritage Event.

Cooksville Historical Sites

Hwy 59 & 138, Cooksville, 608-873-3115
Cooksville is "the town time forgot." Booklets are available listing more than 50 sites on the National Historic Register.

Fisher Schoolhouse

Hwy 213 & Luther Valley Rd., Beloit 608-879-9990 A carefully restored one-room schoolhouse reminiscent of rural Rock County, complete with original ledgers, and archives of the school's history.

Evansville Historic Districts

Downtown area, Evansville
A self-guided walking tour will delight history buffs as well as those who enjoy architecture or just a stroll down quiet tree-lined streets. The city and chamber websites have information, plus the Evansville Library and local businesses offer free walking tour brochures that include maps.
www.evansvillechamber.org
www.ci.evansville.wi.gov/explore_evansville

Grove Society Local History Museum

15 Antes Dr.
Evansville, www.GroveSociety.org
Evansville history is the focus of exhibits housed in the historic Baker Manufacturing Office Building. On the museum grounds is the last tourist cabin from Lake Leota Park, restored to its 1936 appearance. Open Saturdays June through August. For details, contact GroveSociety1@gmail.com or www.facebook.com/EvansvilleGroveSociety

Helen Jeffris Wood Museum Center

426 N. Jackson St., Janesville 608-756-4509 www.rchs.us
Specific hours are available by phone or website. The Rock County Historical Society museum center features changing exhibits, a gift shop, and serves as the visitor and ticketing center for exhibits and the Lincoln-Tallman House tours.



Lincoln-Tallman House

440 N. Jackson St., Janesville 608-756-4509 www.rchs.us
Specific hours available by phone or website. Experience the award-winning tours of Mr. William Morrison Tallman's 1857 Italianate mansion that housed Abraham Lincoln for two nights! The RCHS offers thematic tours.

Hanchett-Bartlett Homestead

2149 St. Lawrence Ave., Beloit 608-365-7835 www.beloithistoricalsociety.com
Open by appointment only, June-September. Step back in time and view how life was in the Mid-1800's



History lovers flock to Beckman Mill for Heritage Days, filled with living history demonstrations and exhibits.



Sterling North Home and Museum

409 W. Rollin St., Edgerton 608-884-3074
 Apr-Dec., Sun. 1-4 pm or by appt.
 Visit the boyhood home of the author of the classic book "Rascal" who lived here with his pet raccoon. The Sterling North Society offers walking tours of North-related sites in town.



in this artfully restored 1857 Victorian homestead, barn, and 1873 Daisy Chapin one-room schoolhouse.

Logan Museum of Anthropology

Beloit College Prospect Ave. and Bushnell St., Beloit College 608-363-2677 www.beloit.edu/logan
 Open Tuesday-Saturday, 11 am-4 pm; closed college holidays. View artifacts from around the world at the internationally renowned Logan Museum. Collections from 123 countries and 480 cultural groups include Native American baskets, Pre-Columbia and Prehistoric Native American ceramics and archaeological specimens from the Beloit vicinity. Free admission.

Luther Valley Historical Society

Depot and W. Centre St., Footville 608-752-1104 or 608-876-6776
 Sat. 9 am-11 am or by appt.

The 1908 Footville State Bank building, which is on the National Historic Register, features changing exhibits and archives of early pioneer families that settled in this area.

Veterans Memorial Plaza

Veterans' Plaza at Traxler Park. Hwy 51/ North Parker Drive, Janesville. 608-755-3030. Open Year Round during daylight hours. Commemorating Janesville's Congressional Medal of Honor, Gold Star Mothers, Purple Heart Medal recipients, along with a Vietnam War Memorial and Global War on Terrorism Memorial.

Milton College Main Hall

513 College St., Milton 608-868-2354
 Museum special events. Building available for rent. Archives of former Milton College can be viewed at Main Hall.

Milton House Museum National Historic Landmark

18 S. Janesville St. Milton 608-868-7772
 www.miltonhouse.org June-August, Tuesday-

Sunday 10 am-4 pm, (Closed major holidays) Sept.-Dec. Please call for appointment
 Experience the Underground Railroad walking through the tunnel that helped freedom seekers find their way to freedom more than 160 years ago. Tour the 1844 historic hexagonal stagecoach inn, as well as an 1837 log cabin, buggy shed and country store.

Stone Water Tower and Water Works Pump House

1003 Pleasant St., Beloit 608-364-2890
 Built in 1885, the pump house was the site of Beloit's first municipal water system. The nearby stone water tower is a visible community landmark. The tower was built to serve as the pedestal for a cypress-board water tank of the Beloit Water Works and is listed on the National Registry of Historical Places.



Experience History
The Milton House
 Wisconsin's Last Authenticated Underground Railroad Station Open for Tours
 Memorial Day - Labor Day, Tuesday Through Sunday 10am - 4pm (Closed All Major Holidays)
 Tours available by appointment year-round Not Open on Weekends in Winter
 f MiltonHouseMuseum www.miltonhouse.org m milttonhousemuseum



Located at the intersection of Janesville St. and Hwy 59, Milton WI 608-868-7772

Things to Do

There are many things to do in Rock County. Celebrate the arts through museums and galleries, as well as local and touring musical, dance and theatrical performances. Meander through acres of international gardens, take in a ball game, or experience commerce in motion. Rock County has something for everyone.

Beckman Mill County Park

11600 Highway H Beloit, WI. 608-751-1551
Enjoy tours of Beckman Mill every weekend from May – October. The park features a working 1868 Grist Mill and Dam, Saw Mill Display, Museum, Visitor Center, Gift Shop, Self-Guided Nature Trails, Creamery, Blacksmith Display, Heritage Garden, Fishing Piers, and Wildlife Viewing. www.BeckmanMill.org

Beloit Art Center

520 Grand Ave., Beloit 608-313-9083
www.beloitartcenter.com
The Beloit Art Center has an art gallery a co-op of artists' studios. The art gallery showcases both resident artist works and traveling exhibits. Monthly exhibits feature local and regional artists.

Beloit Sky Carp

ABC Supply Stadium, 217 Shirland Ave., Beloit April-September. 608-362-2272
www.milb.com/beloit
Enjoy major league fun at minor league prices with the High-A affiliate of the Miami Marlins.

Beloit Water Trails

Enjoy more than 40 miles of navigable waterways in the Beloit area on the Rock River and Turtle Creek. Rock River is accessible at the John Rose Canoe & Kayak Launch in downtown Beloit and other launches. Download Beloit Water Trail maps at www.visitbeloit.com or call 365-4838

The Castle at 501 prospect

501 Prospect St. 608-346-3144
www.thecastlebeloit.com
With its soaring stained glass and magnificent pipe organ, this historic landmark building has been repurposed for the performing arts, wedding banquets, interactive dinner theater, historical field trips, music education, and more! Built in 1906, The Castle is nestled next to Beloit College, the anthropology museum, and historic Rasey House.

Goodrich Square Splash Park

400 Parkview Dr., Milton 608-868-6900
www.milton-wi.gov/splashpad. Milton is home to the new Goodrich Square Splash Pad. Located in South Goodrich Park, this FREE splash pad is perfect for cooling off on hot summer days.

Janesville Art League

Woman's Club, 108 S. Jackson St., Janesville 608-754-4544 Call for hours and exhibits. Browse the art gallery located in this historic building. Monthly featured local artists and rotating permanent exhibits, including more than 200 works from the 1800's to the present.



Large crowds are expected for the Beloit Sky Carp, High-A affiliate of the Miami Marlins, where they play at ABC Supply Stadium in downtown Beloit.

Janesville Jets Ice Hockey

Janesville Ice Arena, 821 Beloit Ave, Janesville 608-752-5387 www.janesvillejets.com
Junior A hockey team in the North Division of the North American Hockey League.

Logan Museum of Anthropology

College St. and Bushnell St., Beloit College, 608-363-267 Founded in 1893, with collections from 123 countries and 480 cultural groups. Check out the "visible storage cube", view pre-Columbian ceramics, North American ethnographic objects and a large basketry collection. Observe the curatorial staff at work. A fascinating exhibit!

Milton College Main Hall

513 College St., Milton 608-868-2354 or 608-868-3651 www.miltoncollege.org
Museum special events. Building available for rent. Archives of former Milton College can be viewed at Main Hall.

Poetry Gardens

Prospect St. & Bushnell St., Beloit College
Designed by world famous public artist Siah Armajani, this 14,000 square foot garden is located on Beloit College's elegant, tree shaded grounds.

Milton House Museum

National Historic Landmark (see ad on page 5)
18 S. Janesville St. Milton 608-868-7772
www.miltonhouse.org
MD-LD: Daily 10 am-3 pm
Tours by appointment.
Experience the Underground Railroad walking through the tunnel that helped slaves find their way to freedom more than 150 years ago. Tour the 1844 historic hexagonal stagecoach inn, as well as an 1837 log cabin, blacksmith shop, smokehouse, buggy shed and country store.

Rock Aqua Jays Water Ski Show Team

Traxler Park, Janesville
www.rockaquajays.org
This championship water ski team performs two free shows each week Memorial Day - Labor Day at Traxler Park.

Rotary Botanical Gardens

1455 Palmer Dr., Janesville 608-752-3885 www.rotarybotanicalgardens.org
Specific hours are available on website. Rotary Botanical Gardens features 20 acres of internationally themed gardens including Japanese, French, Italian, and English cottage. In December, the Holiday Light Show features 1,000,000 twinkling lights.

The Welty Environmental Center

1201 Big Hill Ct, Beloit 608-361-1377 wellycenter.org
Environmental education, ecological and related matters can be offered to teachers, students and others. Call the facility for hours and events.

Wisconsin Wagon Company

507 Laurel Ave., Janesville 608-754-0026 www.wisconsinwagon.com
Tour the home of the Janesville Coaster Wagon and get a glimpse of what Santa's workshop must look like. Call for tour times.

Wright Museum of Art

Prospect St. & Bushnell St. on the Beloit College Campus. 608-363-2702 www.beloit.edu/wright
Tuesday-Sunday from 11:00am to 4:00pm. More than a dozen exhibitions, drawn from the permanent collection, regional and student artists, and national touring shows, fill the galleries year round.

Entertainment

Performance groups from local organizations to internationally renown celebrities entertain throughout Rock County communities. Performances are listed in the Calendar of Events beginning on page 8.

Beloit Civic Theatre
www.beloitcivictheatre.org

**Beloit College International
Performing Arts Series**
www.beloit.edu

Beloit Janesville Symphony Orchestra
608-313-1200
www.beloitjanesvillesymphony.org

Rock River Repertory Theater
www.rockriverrep.com

The Castle Beloit @501 Prospect
www.thecastlebeloit.com

Edgerton Performing Arts Center
608-884-9402 ext. 217
www.edgerton.k12.wi.us/epachomepage.htm

Evansville Community Theatre
Evansvillect@gmail.com
http://evansvillecommunitytheatre.com

Janesville Performing Arts Center
608-758-0297 www.janesvillepac.org



A variety of indoor and outdoor venues host entertainment experiences throughout Rock County.

Janesville Little Theatre 608-756-4172
www.janesvillittletheatre.org

Janesville Presents! 608-758-0297
www.janesvillepac.org

Kids, Fun and Drama (KFAD)
www.kidsfunanddrama.com

Laura Aldrich Neese Theatre
www.beloit.edu

Friends of Riverfront
www.friendsofriverfront.com

Stage One, Inc. 608-208-8254
www.stageonewi.org

SpotLight on Kids 608-758-1451

Theatre Unlimited, Inc. tuijanesville.org

University Theatre 608-758-6565
www.uwu.edu/rock

Golfing in Rock County

Rock County offers 13 golf courses that challenge players of all ability levels. Many communities offer competitive tournaments throughout the summer season. Be sure to call ahead for the best tee times.

- Bass Creek Golf Course, Janesville 608-876-6631
- Beloit Club, Beloit 608-364-9000
- Blackhawk Municipal Golf Course, Janesville 608-757-3090
- Cecilia's Golf Course, Janesville 608-754-8550
- Creekview Par 3, Edgerton 608-884-2250
- Evansville Golf Course, Evansville 608-882-6524
- Glen Erin Golf Club, Janesville 608-741-1100
- Janesville Country Club, Janesville 608-755-7777
- Krueger/Haskell Municipal Golf Course, Beloit 608-362-6503
- Oak Ridge Golf Course, Milton 608-868-4353
- Prairie Woods Golf Course, E. of Janesville, 608-883-6500
- Riverside Municipal Golf Course, Janesville 608-757-3080
- Towne Country Club, Edgerton 608-884-4231

Miniature Golf Courses

- Tee Shack Mini Golf & Driving Range, Janesville 608-897-6862

Disc Golf Courses

- Hilliard Park Disc Golf Course • Beloit (9 holes)
- Lustig Park, Janesville • Riverside Park, Janesville
- Racetrack Park, Edgerton (9 holes)
- Leonard-Leota Park, Evansville (9 holes)



Rock County courses challenge players of all ability levels.



Bike Trails

The Rock County Bikeway encompasses over 200 miles of paved county roads, while many communities offer paved city-wide bike trails showcasing the most scenic views along flowing rivers and lush greenbelt native prairies. For more information see pages 12 and 16.

Ongoing Events

All dates and times are subject to change. Please contact the listed number or website for the most current information on times, fees and event locations.

ROCK COUNTY Ongoing Events

Wed May 17 - August 16 Walk Across Rock County Hike Hike a portion of the trails each week with the Rock County Chapter of the Ice Age Trail Alliance, 608-302-1885, rock.iceagetrail.org

BELOIT Ongoing Events

Sky Carp Baseball April-September. High-A affiliate of the Miami Marlins. ABC Supply Stadium, 217 Shirland Ave., Beloit, 608-362-2272, milb.com/beloit

Beckman Mill Guided Tours May-October. Every Saturday & Sunday from 1-4pm. Corn grinding on 1st Saturday & special event days; group tours by reservation. Suggested \$3 donation. 11600 County Highway H, Beloit, 608-751-1551, beckmanmill.org

Farmers' Market May-October. Every Saturday from 8 am-1 pm, rain or shine! Award-winning market with 100 vendors. State St. and Grand Ave. in Downtown Beloit, 608-365-0150, downtownbeloit.com

Fridays in the Park May-September. Every Friday from 11:30am-1:30pm. Have lunch and enjoy live music. Only \$7! Downtown Beloit. 608-365-0150, downtownbeloit.com

Dancing at Harry's Place June-August. Every other Monday evening from 7-9pm, enjoy free dance lessons on the riverfront! Harry Moore Pavilion, Riverside Park, Hwy 51, Beloit. 608-362-0964, friendsofriverfront.com

Music at Harry's Place June-August. Enjoy free concerts most Friday nights on the riverfront. Food vendors starting at 6 pm and concert at 7pm. Harry Moore Pavilion, Riverside Park, Hwy 51, Beloit. 608-362-0964, friendsofriverfront.com

Beloit Winter Crafter & Farmers' Market November - April. Every Saturday from 9am-12pm, indoors. Downtown Beloit Association, 557 E. Grand Ave., Beloit, 608-365-0150, downtownbeloit.com

EDGERTON Ongoing Events

Sun May - November Sterling North Museum Tours Childhood home of the author of children's book and Disney film "Rascal", Sterling North Museum, 409 W Rollin St, Edgerton, sterlingnorthsociety.com

2nd Wed May - September Tired Iron Cruise Nights 200+ classic cars and trucks, Albron Park, 612 Campus Ln, Edgerton, facebook.com/TiredIronPromotions

Summer Concerts in the Park Series, Central Park, 310 N Main St, Edgerton, artscounciledgerton.com
mid-Sept. - Oct. Fall Fun at Hermanson Pumpkin Patch Hermanson Pumpkin Patch, 127 Co Hwy N, Edgerton, (608) 751-9334, hermansonpumpkinpatch.com

EVANSVILLE Ongoing Events

Baseball Home Talent Evansville Jays May-August games at 7:30pm Thursdays and 1pm Sundays. Home games at Jay's Nest in Leonard Leota Park Upper Baseball Diamond. facebook.com/EvansvilleJays

Creekside Place Art Exhibits Call ahead for hours. Creekside Place Gallery, 102 Maple St, Evansville. 882-0407, creeksideplace.org

Creekside Cruide Night First Thursday, May-September, 5-8pm. Show off your ride with pride! Creekside Place, 102 Maple St, Evansville. 882-0407, creeksideplace.org

Eager Economy Building Micro-Museum The historic building is home to two towering examples of restored Baker-Monitor windmills. 7 E Main St



Evansville Underground Music Year round; weekly/biweekly May-September. Up-and-coming regional artists perform on neighborhood porches, backyards, and indoor venues. Free; donations accepted. facebook.com/groups/2442819112656816

Farmers' Market Sundays, July-September, 11:30am-2pm. Enjoy local food, crafts, and other handmade treasures at Evansville's own Just Beyond The Willow Coffeeshop. See Facebook page for official start date as event nears. Just Beyond The Willow, 501 S Madison St, Evansville. 608-882-4039, beyondwillow@gmail.com, facebook.com/marketatthewillow

Grove Society Local History Museum Open 1-3pm on Saturdays, June-September. Baker Manufacturing Office Building, 15 Antes Dr. On the museum grounds is the last tourist cabin from Lake Leota Park, restored to its 1936 appearance. For details: facebook.com/EvansvilleGroveSociety, GroveSociety.org

Historic District Walking Tour Evansville's four historic districts include the second oldest nationally designated district in the state. Self-guided walking tours. Follow maps in the free Walker's Guide tour book. Copies are available at Creekside Place, City Hall, Eager Free Public Library, and the local History Museum.

Music on the Side Second Wednesday, May-August, 5-8 pm. Creekside Place, 102 Maple St, Evansville. 882-0407, creeksideplace.org

Residential Barn Quilt Tour Evansville is home to 80-plus Barn Quilts. Free brochure with map is available at Creekside Place, City Hall, and Eager Free Library. An online version at ci.evansville.wi.gov/explore_evansville/

JANESVILLE Ongoing Events

Ongoing Library Art Exhibit Hedberg Public Library, 316 S Main St, Janesville, 608-758-6600, hedbergpubliclibrary.org

4th Sat Swing Dance Social Compass Church, 4224 Whilden Ct, Janesville, 608-359-9409

Jan 1 - March 19 Winter StoryWalk Children's book "We Want Snow! A Wintry Chant" by Jamie A. Swenson, laid out along the trail, Robert O. Cook Memorial Arboretum/JSOL, 3550 W Cty Hwy A, Janesville, 608-755-3030

September - April Janesville Jets Hockey Janesville Ice Arena, 821 Beloit Ave, Janesville, 608-752-5387, janesvillejets.com

Through September Rock County Legacies Exhibit Stories and artifacts from the Janesville General Motors plant from 1900 to 2005, Rock County Historical Society, 426 N Jackson St, Janesville, 608-756-4509, rchs.us

1st & 3rd Sat November - April Winter Farmers' Market Uptown Janesville (formerly Janesville Mall), 2500 Milton Ave, Janesville, 608-289-9292, janesvillefarmersmarket.com

Wed - Sun February - October or by appointment Lincoln-Tallman House Tours Tour this beautiful Italianate-style home built in the 1850s, Rock County Historical Society, 426 N Jackson St, Janesville, 608-756-4509, www.rchs.us

March 20 - June 20 Spring StoryWalk Children's book laid out along the trail, Robert O. Cook Memorial Arboretum/JSOL, 3550 W Cty Hwy A, Janesville, 608-755-3030

Fri May - September Live Music on the Bodacious Patio Bodacious Shops of Block 42, 119 N Main St, Janesville, 608-563-5566, bodaciousshopsjanesville.com

Sat May - October Janesville Farmers Market Janesville Town Square, 21 Dodge St, Janesville, 608-289-9292, janesvillefarmersmarket.com

Wed & Sun Memorial Day Weekend - Labor Day Rock Aqua Jays Water Ski Show 21-time National Champion team presents their themed show with pyramids, ballet, jumping and barefoot water skiing, Traxler Park, 600 N Main St, Janesville, rockaquajays.com

mid-May - mid-September Garden Art Exhibit

Rotary Botanical Gardens, 1455 Palmer Dr, Janesville
Thur June 15 - July 6 Kids Noontime Entertainment Palmer Park, 2501 Palmer Dr, Janesville, 608-755-3030

Tue June - August Music at the Marv Free concerts featuring local and regional acts in a variety of genres. Marvin W Roth Community Pavilion at Courthouse Park, 51 S Main St, Janesville, 608-755-3030, downtownjanesville.com

June 21 - September 22 Summer StoryWalk Children's book laid out along the trail, Robert O. Cook Memorial Arboretum/JSOL, 3550 W Cty Hwy A, Janesville, 608-755-3030

Wed, June - August Artrageous Wednesday Live music, local artists, food trucks, full bar, and children's activities. Rock County Historical Society - Tallman Carriage House, 450 N Jackson St, Janesville, 608-756-4509, www.rchs.us

July 25 - August 18 WI Regional Art Program Art Exhibit, Janesville Performing Arts Center, 408 S Main St, Janesville, janesvilleartleague.org

mid-July - mid-August Skelly's Sunflower Experience Five acres of sunflowers, with viewing platforms and Prop Stops for cute photos, Skelly's Farm Market, 2713 S Hayner Rd, Janesville, 608-757-1200, skellysfarmmarket.com

September 4 - October 31 Skelly's Corn Maze & Fall Festival Two corn mazes with GPS enabled map for your smartphone; many family-friendly activities plus retail store and bakery, Skelly's Farm Market, 2713 S Hayner Rd, Janesville, 608-757-1200, skellysfarmmarket.com

September 23 - December 20 Fall StoryWalk Children's book laid out along the trail, Robert O. Cook Memorial Arboretum/JSOL, 3550 W Cty Hwy A, Janesville, 608-55-3030

Weekends in October Forest of Freaks Wisconsin's longest and scariest outdoor haunted forest, The Edge Paintball & Airsoft, 5946 US-51, Janesville, wescaredyou.com

November 24-26 & 30, December 1-3, 7-10, 14-23, 26-30 Holiday Tree Show More than 100 trees and decorations throughout the Lincoln-Tallman House, each beautifully adorned, with more outside, Rock County Historical Society, 426 N Jackson St, Janesville, 608-756-4509 rchs.us

November 24-26 & 30, December 1-3, 7-10, 14-23, 26-30 Holiday Light Show Stroll through a winter wonderland of over one million twinkling lights! a fun family activity, Rotary Botanical Gardens, 1455 Palmer Dr, Janesville, 608-752-3885, rotarybotanicalgardens.org

December Striegel Light Show Home decorated with 20,000 lights synchronized to music you can listen to on your car radio, Striegel Home, 3767 Stone Ridge Dr, Janesville, facebook.com/striegelights

Milton Ongoing Events

Fri Live Music at Northleaf Winery 232 S Janesville St, Milton, 608-580-0575, northleafwinery.com

Memorial Day - Labor Day Goodrich Square Splash Pad Goodrich Square, 400 Parkview Dr, Milton, 608-868-6900, milton-wi.gov/splashpad

Tue - Sun Memorial Day - Labor Day or by appointment Milton House Tours Tour this 1844 Stagecoach Inn that was part of the Underground Railroad, Milton House Museum, 18 S Janesville St, Milton, 608-868-7772, miltonhouse.org

Summer Milton Night Markets Goodrich Square, 400 Parkview Dr, Milton

Summer Concerts on the Lawn The Gathering Place, 715 Campus St, Milton

Calendar of Events

JANUARY

3-31 Teen Titanic LEGO® Build, Hedberg Public Library - Teen Central, 316 S Main St, Janesville, 608-758-6585, hedbergpubliclibrary.org

4, 6, 7, 20, 21, 27, 28 Janesville Jets Hockey, Janesville Ice Arena, 821 Beloit Ave, Janesville, 608-752-5387, janesvillejets.com

6 Candlelight Hike at JSOL, Janesville School Outdoor Lab (JSOL), 3570 County Road A, Janesville, iceagetrail.org

7 Candlelight Hike at Storrs Lake, Storrs Lake Wildlife Area, Storrs Lake Rd, Milton, 608-302-1885, rock.iceagetrail.org

11-14 She Kills Monsters A comedic romp into the world of fantasy role-playing games and a heart-pounding homage to the geek and warrior within us all, Parker High School, 3125 Mineral Point Ave, Janesville, 608-743-5591, parker-arts.com

13 Comedy on Main, Janesville Performing Arts Center, 408 S Main St, Janesville, 608-758-0297, janesvillepac.org

14 Steely Dane 14 Dane County musicians uniting to perform the Steely Dan and Donald Fagen songbook, Janesville Performing Arts Center, 408 S Main St, Janesville, 608-758-0297, janesvillepac.org

15 Show Me Reptile & Exotics Show, Holiday Inn Express / Janesville Conference Center, 3100 Wellington Pl, Janesville, showmesnakes.com

17 Railroad Slideshow, Hedberg Public Library, 316 S Main St, Janesville, 608-758-6585, hedbergpubliclibrary.org

18 Live at the Venue: Cash Box Kings, The Venue, 37 S Water, Janesville, 608-373-9727, thevenuejanesville.com

21 Railroad Display, Hedberg Public Library, 316 S Main St, Janesville, 608-758-6585, hedbergpubliclibrary.org

21 Candlelight Hike at Rock River Heritage Park, Rock River Heritage Park, 5801 N River Rd, Janesville, iceagetrail.org

21 Friends of Rock County Parks Candlelight Hike, Rock River Heritage Park, 6-8pm. Enjoy the beauty of the park trails, lit by hundreds of candles.

27-29 Beloit Winterfest Indoor and outdoor festivities. 608-364-2875, beloitrecreation.com/beloit-winterfest

27 Improv Night with Steadily Improv'ing, Janesville Performing Arts Center, 408 S Main St, Janesville, 608-758-0297, janesvillepac.org

28 LEGO® Showcase, Hedberg Public Library - Teen Central, 316 S Main St, Janesville, 608-758-6585, hedbergpubliclibrary.org

28 Rock County Arts Hall of Fame, Janesville Performing Arts Center, 408 S Main St, Janesville, 608-758-0297, janesvillepac.org

31 An Eagle's Journey, Hedberg Public Library Program Room, 316 S Main St, Janesville, 608-758-6585, hedbergpubliclibrary.org

FEBRUARY

2-4 Winter Used Book Sale Thursday 1-5pm, Friday 9am-5pm, Saturday 9am-12pm. Sponsored by the Friends of the Eager Free Public Library. Grange Mall (lower level), 19 W Main St, Evansville 882-2260, facebook.com/friendsofEFPL, friendsefpl@gmail.com

3, 4 Janesville Jets Hockey, Janesville Ice Arena, 821 Beloit Ave, Janesville, 608-752-5387, janesvillejets.com

3-5 Tales of Adventure, Multi-media production telling six stories of nine local people and their extraordinary courage, Janesville Performing Arts Center, 408 S Main St, Janesville, 608-758-0297, janesvillepac.org



4 Lunar New Year Celebration, Hedberg Public Library, 316 S Main St, Janesville, 608-758-6585, hedbergpubliclibrary.org

11 The Legendary Count Basie Orchestra, Edgerton Performing Arts Center, 200 Elm High Dr, Edgerton, 608-561-6093, edgertonpac.com

11 Mardi Gras Celebration, Hedberg Public Library, 316 S Main St, Janesville, 608-758-6585, hedbergpubliclibrary.org

11 Janesville Stamp Club Exhibition & Bourse, Holiday Inn Express / Janesville Conference Center, 3100 Wellington Pl, Janesville, 608-758-1354, wfscstamps.org

11 Candlelight Ski/Hike at Rockport Park, Rockport Park, 2801 Rockport Rd, Janesville

11 Jim Neal Memorial Decoy and Sporting Collectibles Show, Tri-County Community Center, 112 Swift St, Edgerton

11 Chocolate Extravaganza Admission fee. Creekside Place, 102 Maple St, Evansville. 882-0407, info@creeksideplace.org



15 Honors Orchestra and Band Concert, Janesville Performing Arts Center, 408 S Main St, Janesville, 608-758-0297, janesvillepac.org

15 Live at the Venue: Banana Wind, The Venue, 37 S Water St, Janesville, 608-373-9727, thevenuejanesville.com

16 Let Loose and Laugh with Charlie Berens, Janesville Performing Arts Center, 408 S Main St, Janesville, 608-758-0297, janesvillepac.org

16 Genealogy Workshop 12-2pm. Topic TBD. Free. Creekside Place, 102 Maple St, Evansville facebook.com/EvansvilleGroveSociety

17 Rock County Mega Sale Indoor flea market, Rock County Fairgrounds, 1301 Craig Ave, Janesville, 608-201-8217

17-18 5th Annual 8 Pin Bowling Tap Tournament Chamber event open to everyone. Blue Devil Bowl, 108 E Main St, Evansville. 882-5131, facebook.com/evansvillecoc

18 23rd Annual The Heat is On! Chili Cookoff Admission fee. 3-7pm. Creekside Place, 102 Maple St, Evansville. 882-0598, ecp-wi.org

18 Pooch Pull, Alaskan Malamute Club of Wisconsin's weight pull competition, Humane Society of Southern Wisconsin, 222 S Arch St, Janesville, 608-752-5622, petsgohome.org

24-March 5 Beloit International Film Festival (BIFF) Downtown venues! Times vary. 608-313-1200, beloitfilmfest.org

25 Maple Sugar Fest 8am-12pm. Welty Environmental Center. 1201 Big Hill Ct., 608-361-1377, weltycenter.org

25, 26 Local Dance Showcase, Janesville Performing Arts Center, 408 S Main St, Janesville, 608-758-0297, janesvillepac.org

25 Flannelfest Craft Beer Experience Over 40 craft beers and over 50 home brew beers, plus unlimited game play and a commemorative tasting mug, Janesville Town Square, 15 Dodge St, Janesville, 608-728-3322, downtownjanesville.com

MARCH

3-4 Vintage Shop Hop Vintage, handmade and repurposed treasures at Evansville Main St proprietors. vintageishopblogspot.com/

3-5, 10-12 The SpongeBob Musical, Parker High School, 3125 Mineral Point Ave, Janesville, 608-743-5591, parker-arts.com

4 Spring Fling Vendor Expo, Rock County Fairgrounds - Craig Center, 1301 Craig Ave, Janesville

4-5 Show Me Reptile & Exotics Show, Holiday Inn Express / Janesville Conference Center, 3100 Wellington Pl, Janesville, showmesnakes.com

5 FFA Farm Toy Show Admission fee. 9am-2pm, Evansville School District Field House, 320 Fair St. 882-4125, facebook.com/evansville.wi.ffa.alumni/

10, 11, 31 Janesville Jets Hockey, Janesville Ice Arena, 821 Beloit Ave, Janesville, 608-752-5387, janesvillejets.com

10 Irish Comedy Tour, Janesville Performing Arts Center, 408 S Main St, Janesville, 608-758-0297, janesvillepac.org

15 Live at the Venue: Paddygrass, The Venue, 37 S Water St, Janesville, 608-373-9727, thevenuejanesville.com

16 Celtic/Irish Dance Demo, Hedberg Public Library - Program Room, 316 S Main St, Janesville, 608-758-6585, hedbergpubliclibrary.org

16 Genealogy Workshop 12-2pm. Topic TBD. Free. Creekside Place, 102 Maple St, Evansville. facebook.com/EvansvilleGroveSociety

18 Henhouse Prowlers Unique traditional American music with international elements, Edgerton Performing Arts Center, 200 Elm High Dr, Edgerton, 608-561-6093, edgertonpac.com

24-26 Badger Knife Show, Holiday Inn Express and Janesville Conference Center, 3100 Wellington Place, Janesville, 414-479-9765, badgerknifeclub.com

25-26 Rock, Gem & Mineral Show, Rock County Fairgrounds, 1301 Craig Ave, Janesville, 608-935-0597, badgerrockclub.org

31 Improv Night with Steadily Improv'ing, Janesville Performing Arts Center, 408 S Main St, Janesville, 608-758-0297, janesvillepac.org

APRIL

1, 7, 8 Janesville Jets Hockey, Janesville Ice Arena, 821 Beloit Ave, Janesville, 608-752-5387, janesvillejets.com

2 Easter Egg Hunt, Carver-Roehl Park, 1pm sharp, Friends of Carver-Roehl Park

7 Comedy on Main, Janesville Performing Arts Center, 408 S Main St, Janesville, 608-758-0297, janesvillepac.org

8 Downtown Easter Eggstravaganza Photos with Easter Bunny, followed by hunt. Corner of State and Grand, Downtown Beloit, downtownbeloit.com

8 MACC Easter Egg Scramble, Throughout Milton

13-16 UWW-Rock County Musical Theater Show, UW-Whitewater at Rock County, Kirk Denmark Theatre, 2909 Kellogg Ave, Janesville

19 Live at the Venue: The Jimmys, The Venue, 37 S Water St, Janesville, 608-373-9727, thevenuejanesville.com

20 Genealogy Workshop 12–2pm. Topic TBD. Free. Creekside Place, 102 Maple St, Evansville. facebook.com/EvansvilleGroveSociety

21–23 Disney's Beauty and the Beast 7:30pm Friday, 2 & 7:30pm Saturday, 2pm Sunday. Admission fee. High School Performing Arts Center, 640 S Fifth St, Evansville. sites.google.com/ecsdnet.org/evansville-hs-drama/musical

22 Downtown Beloit Spring Wine Walk 2–6pm. Downtown Beloit. 608-365-0150, downtownbeloit.com

22 Wisconsin Singers, Edgerton Performing Arts Center, 2pm & 6:30pm, 200 Elm High Dr, Edgerton, 608-561-6093, edgertonpac.com

22 Earth Day at the Gardens, Family-friendly celebration with kids activities; Zoozort animal show. Rotary Botanical Gardens, 1455 Palmer Dr, Janesville

24 UW-Rock County Chamber Orchestra, UW-Rock County, Kirk Denmark Theatre, 2909 Kellogg Ave, Janesville, uwww.edu/rock

29 Rock County Legacies Gala, VenueTBA, Janesville, 608-756-4509, rchs.us

29 Prescription Drug Takeback Day 10am–12pm. Location TBD. buildingasaferevansville.org/

MAY

1 UW-Rock County Concert Band, UW-Rock County, Kirk Denmark Theatre, 2909 Kellogg Ave, Janesville, rock.uwc.edu

4 Creekside Cruise Night 5–8pm. Free, Creekside Place, 102 Maple St, Evansville. 882-0407, facebook.com/creeksidecruise

5-7, 11-14 Joseph and the Amazing Technicolor Dreamcoat, Parker High School, 3125 Mineral Point Ave, Janesville, 608-743-5591, parker-arts.com

6 JPAC Annual Gala, Janesville Performing Arts Center, 408 S Main St, Janesville, 608-758-0297, janesvillepac.org

6 Opening Day Celebration at Beckman Mill, Noon–4pm, Friends of Beckman Mill, 608-751-1551

10 Music on the Side 5–8 pm. Free. Creekside Place, 102 Maple St., Evansville. 882-0407.

12 Art Crawl Evansville Main Street shops host up to 30 artists. Refreshments, entertainment. facebook.com/evansvilleartcrawl

12-14 Team World Horseshoe Tournament, 8:30am–8pm Friday, 8am–7:30pm Saturday, 8am–5pm Sunday, facebook.com/Beloit-Horseshoe Club17 Live at the Venue Concert, The Venue, 37 S Water St, Janesville, 608-373-9727, thevenuejanesville.com

18 Genealogy Workshop 12–2pm. Topic TBD. Free. Creekside Place, 102 Maple St, Evansville. facebook.com/EvansvilleGroveSociety

20 Friends of Rock County Parks Bike Ride, 7am, Start and end at Turtle Creek Parkway. Register on the day of the ride for various route distances.

20 Downtown Wine Walk, Downtown Janesville - Town Square, 69 S River St, Janesville, 608-728-3322, janesvillewinewalk.com

20 Pairings That Please, Glen Erin Golf Club (Celtic House), 1417 W Airport Rd, Janesville, 608-756-4638

20-21 Civil War Living History Days, Mingle with Civil War era reenactors, see artillery, infantry and medical demonstrations, and rub elbows with President Abraham Lincoln, Milton House Museum & North Goodrich Park, 18 S Janesville St, Milton, 608-868-7772, miltonhouse.org

20-21 Janesville Renaissance Faire, Five stages of unique entertainment, over 45 merchants selling handmade goods, and family fun in an immersive, historically themed event, Traxler Park, 600 N Main St, Janesville, 608-289-0699, jvrenfaire.com



21 Show Me Reptile & Exotics Show, Holiday Inn Express / Janesville Conference Center, 3100 Wellington Pl, Janesville, showmesnakes.com

29 Memorial Day Parade & Ceremony, Downtown Janesville, Main St & Milwaukee St, Janesville

29 Memorial Day Recognition Parade and Rally in the Alley, 179 E Main St, Evansville. 882-2335

JUNE

1 Creekside Cruise Night 5–8pm, Creekside Place, 102 Maple St, Evansville. 882-0407, facebook.com/creeksidecruise

2 Comedy on Main, Janesville Performing Arts Center, 408 S Main St, Janesville, 608-758-0297, janesvillepac.org

3 Rock County Dairy Breakfast, Daluge Family Farm, 3719 S Co Rd G, Janesville

3 Grove Society Museum Season opening for museum and Antes Cabin. 1–3pm Saturdays through August. 15 Antes Dr, Evansville. facebook.com/EvansvilleGroveSociety

4 National Trails Day Hike, Riverside Park North Pavilion, 2600 Parkside Dr, Janesville

9 Grapes & Hops, Southern Wisconsin Regional Airport - Revv Aviation Hangar, 4060 S Atlantis Dr, Janesville, 608-755-4123, kanduindustries.com



©FULL SPECTRUM PHOTOGRAPHY

10 Pride Cookout, Palmer Park Hilltop Pavilion, 2501 Palmer Dr, Janesville, janesvillepride.com

14 Music on the Side 5–8 pm. Free. Creekside Place, 102 Maple St., Evansville. 882-0407.

15 Genealogy Workshop 12–2pm. Topic TBD. Free. Creekside Place, 102 Maple St, Evansville. facebook.com/EvansvilleGroveSociety

15 Tour of America's Dairyland, Janesville Town Square Gran Prix Kickoff the Tour of America's Dairyland Series, eleven days of exciting bicycle criterium racing, Downtown Janesville. janesvilletownsquaregranprix.com

17 Juneteenth Celebration, Prayer, poetry, speeches, acknowledgement of local residents, music and fun. visitbeloit.com/calendar

17 Janesville Morning Rotary's 23rd Annual Pie Ride, Bicycling event featuring 5K, 20K, 50K and 100K routes, Town Square, 69 S River St, Janesville, pieride.org

18 Vintage Car Show, Rock County Historical Society, 440 N Jackson St, Janesville, 608-756-4509, rchs.us

24 Downtown Pride Bar Crawl, Downtown Janesville, Janesville, janesvillepride.com

24 Mercury Open Water Ski Show Tournament, Traxler Park, 600 N Main St, Janesville

30 Improv Night with Steadily Improving, Janesville Performing Arts Center, 408 S Main St, Janesville, 608-758-0297, janesvillepac.org

30 Ice Cream Social Friends of the Eager Free Public Library Time and place TBD. 882-2260, facebook.com/friendsofEFPL, friendsefpl@gmail.com

30 A Lake Leota Fourth Live music and local food. Day of the Fourth includes youth fishing tournament, Rumble in the Park Car Show, 10am parade, and fireworks at dusk. 882-0598, ecpi-wi.org, facebook.com/ALakeLeota4th/

JULY

1 Sip & Shop Market Craft Fair, Fermenting Cellars Winery, 2004 W Manogue Rd, Janesville, 608-201-8217

1–2 & 4 A Lake Leota Fourth Live music and local food. Day of the Fourth includes youth fishing tournament, Rumble in the Park Car Show, 10am parade, and fireworks at dusk. 882-0598, ecpi-wi.org and facebook.com/ALakeLeota4th/

1–4 Rhythm & Booms 4th of July Festival, Schilberg Park, 301 W High St, Milton

3 Edgerton Lions Fireworks Festival, Racetrack Park, 900 Stoughton Rd, Edgerton, edgertonfireworks.com

4 Concert and Fireworks, Music by the Beloit Janesville Symphony Orchestra and a fireworks show. visitbeloit.com/calendar

4 Milton 4th of July Parade, Madison Ave, Milton

4 Independence Day on the Rock, Live music, a beer tent, food trucks, a performance by the Rock Aqua Jays waterski show team, and fantastic fireworks sponsored by Festival Foods, Traxler Park, 600 N Main St, Janesville, festfoods.com

4 Evansville 4th of July Fun Run/Walk 7:30am Leonard-Leota Park. 10K/5K/1Mile run-walk. facebook.com/Evansville-4th-of-July-Run-Walk. Instagram.com/EvansvilleRunWalk, evansvillerunwalk@gmail.com

6 Creekside Cruise Night 5–8pm. Free. Creekside Place, 102 Maple St, Evansville. 882-0407, facebook.com/creeksidecruise

8 Tobacco Town Showdown Truck & Tractor Pull, Thresherman's Park, 332 E Co Rd M, Edgerton

12 Music on the Side 5–8 pm. Free. Creekside Place, 102 Maple St., Evansville. 882-0407.

14 Comedy on Main, Janesville Performing Arts Center, 408 S Main St, Janesville, 608-758-0297, janesvillepac.org

14-16 Tobacco Heritage Days, Live music, the Rascal Run 5k run/walk and 1 mile run/walk, and activities for the whole family, Downtown & Racetrack Park, Edgerton, 608-751-2258, edgertontobaccodays.com

15 Arts in the Park, Albion Park, 612 Campus Ln, Edgerton

15 Clay Day, Art & Pottery Festival, Racetrack Park, 900 Stoughton Rd, Edgerton, artscouncilledgerton.com

15 Tobacco Days Car & Truck Show, Downtown Edgerton, Edgerton, tobaccodayscarandtruckshow.com

15 Lager Than Life Beer Festival, 2–6pm. More than 30 breweries celebrating the effervescent lager beer. Preservation Park, visitbeloit.com/lager

16 Ice Cream Social at Beckman Mill, Noon–4pm, Friends of Beckman Mill, 608-751-1551

16 Show Me Reptile & Exotics Show, Holiday Inn Express / Janesville Conference Center, 3100 Wellington Pl, Janesville, showmesnakes.com

20 Genealogy Workshop 12–2pm. Topic TBD. Free. Creekside Place, 102 Maple St, Evansville. facebook.com/EvansvilleGroveSociety

25-30 Rock County 4-H Fair, Rock County Fairgrounds, 1301 Craig Ave, Janesville, 608-755-1470, rockcounty4hfair.com

25 Daniel Adam Maltz Pianoforte Concert, Rock County Historical Society, 440 N Jackson St, Janesville, 608-756-4509, www.rchs.us
28 WRAP Artists Reception, Janesville Performing Arts Center, 408 S Main St, Janesville, janesvilleartleague.org

AUGUST

TBD Evansville Annual Chamber of Commerce Golf Outing All welcome to play. Evansville Golf Club, 8501 N Cemetery Rd, Evansville. 882-5131, facebook.com/evansvillecoc

3 Creekside Cruise Night 5-8pm. Free. Creekside Place, 102 Maple St, Evansville. 882-0407, facebook.com/creeksidecruise

3-5 Summer Used Book Sale Thursday 1-5pm, Friday 9am-5pm, Saturday 9am-12pm. Sponsored by the Friends of the Eager Free Public Library. Grange Mall (lower level), 19 W Main St, Evansville. 882-2260, facebook.com/friendsofEFPL, friendsepl@gmail.com

4-5 Evansville's Citywide Garage Sale Days From A-Z, it's here: collectibles, treasures & more.

4-5 Downtown Beloit Street Dance and Sidewalk Sales August 4 sidewalk sales, 8am-2pm with children's activities. Street Dance at 5:30-11pm on the 300 block of State St. \$10 admission. August 5 sidewalk sales, 8am-1pm. 608-365-0150, downtownbeloit.com

5-6 Tallman Arts Festival, Rock County Historical Society, 440 N Jackson St, Janesville, 608-756-4509, rchs.us

9 Music on the Side 5-8 pm. Free. Creekside Place, 102 Maple St, Evansville. 882-0407.

10 Evansville Night Out In partnership with the Evansville Police Department. Free. Evansville. buildingasaferevansville.org/

11, 12 Pete Lee, Nationally recognized Janesville comedian, Janesville Performing Arts Center, 408 S Main St, Janesville, 608-758-0297, janesvillepac.org

12 US Kubb Open, Pohlman Field at Telfer Park, Beloit.. Registration begins at 7:30am. An all team meeting at 8:30am and play starts at 9am. kubbunited.com/us-kubb-open

17 Genealogy Workshop 12-2pm. Topic TBD. Free. Creekside Place, 102 Maple St, Evansville. facebook.com/EvansvilleGroveSociety

18 Improv Night with Steadily Improving, Janesville Performing Arts Center, 408 S Main St, Janesville, 608-758-0297, janesvillepac.org

19 Beloit Dirty Dash Ages 5-18 mud run and obstacle course in Big Hill Park! 608-364-2890, beloitrecreation.com/dirty-dash

20 MACC Pork Roast, North Goodrich Park, 20 Parkview Dr, Milton

26 Vino & Vendors Market, Fermenting Cellars Winery, 2004 W Manogue Rd, Janesville, 608-201-8217

27 History in the Park Program and time TBD. Free. Leonard Leota Park, Evansville. facebook.com/EvansvilleGroveSociety

SEPTEMBER

TBA Art Infusion, Sidewalk chalk art competition with large scale painted wall murals, Fireman's Park & Downtown Janesville, 113 N Main St, Janesville, janesvillecvb.com

TBA Ladies Night Out Admission fee. Swag bag, refreshments, entertainment, prizes, and specials at Main St businesses. 882-5131, facebook.com/evansvillecoc, facebook.com/LNOEvansville

1-4 Rock River Threshere, Living history festival with working antique steam engines and equipment demonstrations, military displays, kids activities and much more, Thresherman's Park, 51 E Cox Rd, Edgerton, 608-868-2814, threshere.com



MARIAH CALLEY

7 Creekside Cruise Night 5-8pm. Free. Creekside Place, 102 Maple St, Evansville. 882-0407, facebook.com/creeksidecruise

8-9 Chilimania & Country Edge Concert, Wisconsin State Championship CASI-Sanctioned Chili Cook-Off, live music, and more, Downtown Edgerton, 99 N Henry St, Edgerton, 608-561-7566, chilimania.com

8 Movie on the Big Lawn 6:30pm. Riverside Park, Beloit, friendsofriverfront.com

9-10 Thunder on the Rock, Beloit. 11am-5pm. Stock outboard, modified outboard, junior classes, and more. marineracingclub.com

10 Heritage Days at Beckman Mill, 11am-4pm, Friends of Beckman Mill, 608-751-1551

11 Just Desserts Free event to recognize efforts of local community members. Time and location TBD. 882-0598, www.ecpi-wi.org



16 CreekFest A community celebration, featuring live music from the Pink Houses, food and art. 3-9pm. Farmers market until 6pm, food 4-8pm. Creekside Place, 102 Maple St, Evansville. 882-0407, info@creeksideplace.org

17 Beloit Autorama 47th annual. 8am-4pm. Preservation Park, beloitautorama.com

21 Genealogy Workshop 12-2pm. Topic TBD. Free. Creekside Place, 102 Maple St, Evansville. facebook.com/EvansvilleGroveSociety

23 Oktoberfest 5:30-11pm. \$10 admission. German beer, music and food! Sidewalk sales, 8am-1pm in Downtown Beloit. downtownbeloit.com

23 8th Annual Flying Circus Fun FLY 8am-4pm. 6806 S. County Rd., facebook.com/rockriveraero

16 Twilight Tours & Tastings at the Milton House Museum, Milton House Museum, 18 S Janesville St, Milton, 608-868-7772, miltonhouse.org

OCTOBER

1 Fall Fest at Carver-Roehl Park, 11:30am-2:30pm, Friends of Carver-Roehl Park

6-7 Vintage Shop Hop Vintage, handmade and repurposed treasures at Evansville Main St proprietors. vintageshop.blogspot.com/

7 House of Mercy Charity Ball, Celtic House - Glen Erin Golf Club, 1417 W Airport Rd, Janesville, 608-741-2422

7 Mammoth Challenge Hike, Downtown Janesville, 69 S River St, Janesville, iceagetrail.org

8 Back Bar Charity Car, Truck & Bike Show, The Back Bar, 1901 Beloit Ave, Janesville, 608-751-2201, thebackbar.com

11-14 Enchanted Forest & Hollywood Hayride, Palmer Park, 2501 Palmer Dr, Janesville, 608-755-3030

2nd weekend Pride in the Park Festival, Town Square, 69 S River St, Janesville, janesvillepride.com

14 Downtown Wine Walk, Downtown Janesville - Town Square, 69 S River St, Janesville, 608-728-3322, janesvillewinewalk.com

14 Fall Wine Walk 2-6pm. Downtown Beloit. 608-365-0150, downtownbeloit.com

18 Taste of Chamber 5-8pm. Eclipse Center. 3 Eclipse Blvd., Beloit, 608-313-0700, greaterbeloitichamber.org

19 Genealogy Workshop 12-2pm. Topic TBD. Free. Creekside Place, 102 Maple St, Evansville. facebook.com/EvansvilleGroveSociety

21 Cemetery Tour, Historical interpreters sharing stories of past local residents, Oak Hill Cemetery, 1725 N Washington St, Janesville, 608-756-4509, www.rchs.us

28 Fall Festival Vendor Expo, Rock County Fairgrounds - Craig Center, 1301 Craig Ave, Janesville

28 Downtown Beloit Halloween Costume Parade & Party Horace White Park, 10am. Trick or Treat at Downtown businesses during the last Farmers' Market of the season. 608-3650150, downtownbeloit.com

29 Show Me Reptile & Exotics Show, Holiday Inn Express / Janesville Conference Center, 3100 Wellington Pl, Janesville, showmesnakes.com

NOVEMBER

16 Genealogy Workshop 12-2pm. Topic TBD. Free. Creekside Place, 102 Maple St, Evansville. facebook.com/EvansvilleGroveSociety

17-18 Olde Fashioned Christmas Kick off the holidays! Family fun, shopping and activities. Downtown Evansville. 882-5131, facebook.com/oldefashionedchristmas

18 Annual Holiday Bazaar 9am-2pm. St John's Lutheran Church, 312 S Third St, Evansville. office@stjohns-lc.org

22 Thanksgiving Pie Sale Time and place TBD. Sponsored by the Friends of the Eager Free Public Library. 882-2260, facebook.com/friendsofEFPL, friendsepl@gmail.com

23 Festival Foods Turkey Trot, 5-mile run, untimed 2-mile fun run, or an untimed 2-mile walk, Boys & Girls Club/YMCA, 200 W Court St, Janesville, festivalfoodsturkeytrot.com

24 Grand Lighted Holiday Parade & Tree Lighting 5-8pm. Lighted parade, live music, tree lighting, photos with Santa. 608-365-0150. downtownbeloit.com
30 - Dec 3 Merry Milton Weekend. Kick off the holiday season with activities throughout Milton.

30 Wreaths on Parade, Milton House Museum, 18 S Janesville St, Milton, 608-868-7772, miltonhouse.org

DECEMBER

1 Holidazzle 5-9pm. Live music, Santa visits, free trolley rides. Beloit. 608-365-0150, downtownbeloit.com

1-3 Janesville's Jolly Jingle, Fun family getaway weekend filled with activities, Downtown Janesville. janesvillejollyjingle.com

3 Hotdogs with Santa, The Gathering Place, 715 Campus St, Milton

3 Show of Lights, Throughout Milton.

3 Christmas Walk, Throughout Milton.

3 39th Evansville Craft Fair \$1 admission fee, school age and up. 9am-2pm. Lunch available on site. J.C. McKenna Middle School, 307 S First St, Evansville. 882-4780

3 Ecumenical Holiday Choir Concert 7pm. Free. St John's Lutheran Church, 312 S Third St, Evansville. facebook.com/groups/2542320252528815

8-10 A Christmas Carol at the Milton House, The Milton House Museum, 18 S Janesville St, Milton, 608-868-7772, miltonhouse.org

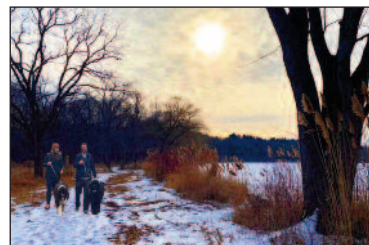
Trails on Land

Key: H - Hiking, B - Biking, I - In-line Skating, X - Cross-country skiing, E - Equestrian

Name	E	H	B	I	X	Miles/Type	Access	Features
Big Hill Park Beloit		•			•	Paved & Gravel	County Rd. D - Afton Rd.	Panoramic view of river, beautiful fall color
Carver Roehl County Park Clinton		•			•	2 miles, unpaved	4907 S. Carver's Rock Rd.	One of Rock County's most scenic parks offering hiking and skiing trails through magnificent limestone outcroppings.
County Hwy D Beloit			•			Bike lane along paved county road	Big Hill Park on County D	Scenic ride along the river
Edgerton Trail Edgerton		•	•		•	Paved & gravel	Central Park, Hwy 51	Historic Log Cabin in Clay Pit Heritage Park
Gibbs Lake County Park near Evansville	•	•			•	Unpaved	Off Gibbs Lake Road	Panoramic view of the lake and scenic ride/hike/ski through woods & retired farmland
Happy Hollow County Park Janesville	•	•			•	4 miles, unpaved	1731 W. Happy Hollow Rd	Great trails for bird watching, shore fishing, and horseback riding along the Rock River.
Glacial River Bike Trail Janesville / Milton		•	•	•		40 miles, paved Janesville to Watertown	Highway 26	Newly paved trail along Hwy 26 corridor connecting local communities from Janesville to Milton to Watertown
Kiwanis Trail Janesville		•	•	•		3 miles, paved & gravel	Milwaukee St. at the Rock River, Riverside Park	City streets for part of trail, part of Ice Age Corridor.
Magnolia Bluff County Park Evansville	•	•			•	6 miles, unpaved	4002 N. Croak Rd. Evansville	Scenic view at Rock County's highest point. Beautiful trails meandering through Magnolia Bluff State Natural Area.
Multi-Use Trail Janesville / Milton	•	•	•			4 miles unpaved	Kennedy Road at I-90 in Janesville Vincent St. in Milton	Rail-trail suitable for hiking, horses, mountain bikes
National Ice Age Trail Janesville		•	•		•	14 miles, paved & unpaved	See Spring Brook & Kiwanis Trail	Southernmost point of Ice Age Trail, highlighting Glacial history.
Pelishek-Tiffany Nature Trail Clinton	•	•	•			5.5 miles, unpaved	Mill St. (CTH J) in downtown Clinton	Wildflowers and wildlife, suitable for mountain bikes. Bridle path.
River Walk Trail Beloit		•	•	•		4 miles, paved	Riverside Park at US Hwy 51 & Hwy 81	Along Rock River, playground, museums.
Rock County Bikeway			•			Over 200 miles of paved county roads	Various locations, See county map, page 18-19	Signed, easy routes on low traffic county roads.
Peace Trail (Rock River) Janesville		•	•	•	•	4 miles, paved & gravel	Monterey Dam, Fisher Creek Parking Area	Scenic river trail.
Rockport Park Janesville		•	•		•	7 miles, unpaved	West of Hwy 51 on Rockport Rd.	Hilly terrain, suitable for hiking, mountain biking, and x-country skiing.
Spring Brook Trail Janesville		•	•	•	•	5 miles, paved & unpaved	Palmer Park at Hwy 11 & I-90	Part of the Ice Age Corridor, Rotary Botanical Gardens, playground.
Storr's Lake Wildlife Area Milton		•			•	Unpaved	East of Hwy 26 on Storr's Lake Road	Open marsh and grasslands, scattered woodlands, lake.
Turtle Creek Greenway Beloit		•			•	Unpaved	Hwy 81, 1 mile west on I-90	Follows section of Turtle Creek, wildlife, and scenery.
Robert O. Cook Memorial Arboretum Janesville		•				Unpaved	Cty Hwy A, West of Janesville at Austin Rd.	Hilly terrain, suitable for hiking
Devil's Staircase Janesville		•				Unpaved	Riverside Park at base of hill before golf course	Part of the Ice Age Trail overlooking the Rock River

Rock County Parks offer a variety of recreational opportunities. See the chart on page 13 for park information.

For more information about regional trails visit wisconsintrails.com or scan the code.



Explore County Parks

Refer to Rock County Map on pages 18-19 www.co.rock.wi.us/parks



Rural Rustic Roads

Refer to Rock County Map on pages 18-19

1 Airport Park Watch air traffic while picnicking at this park near the Southern WI Regional Airport.	Picnic Area
2 Beckman Mill Park A restored grist mill on Raccoon Creek is part of this scenic park's charm.	Canoeing Picnic Area Fishing Wildlife Area
3 Carver-Roehl Park Near Clinton, this park is home to a scenic limestone outcropping that stretches throughout the 53-acre park. 1.5 mi. trail	Cross country Skiing Hiking Picnic Area Wildlife Area
4 Gibbs Lake Park The largest county park, Gibbs Lake Park is a great place to get out in the country and enjoy nature.	Cross-country Skiing Bridle Path Boat Landing Canoeing Fishing Hiking Picnic Area
5 Happy Hollow Park Located between Janesville and Beloit, this 191-acre county park along the Rock River is a hidden jewel.	Boat Landing Bridle Path Fishing Hiking Cross-Country Skiing Wildlife Area
6 Indianford Park One of the best fishing spots in the county is at this park along the Rock River in Indianford.	Canoe portage around Indianford Dam Fishing Carry-in Boat Landing Picnic Area
7 Lee Park This park near Clinton is home to a softball diamond and wildlife area.	Picnic Shelter Ball Diamond Picnic Area Hiking
8 Magnolia Bluff Park Take in breathtaking views from the bluff and the county's only naturally occurring birch stand at this scenic park with 4 mi. trail in western Rock County.	Cross-country Skiing Hiking Trail Picnic Area Wildlife Area Bridle Path
9 Murwin Park Located on Caledonia Rd. in Fulton on the North bank of the Yahara River.	Canoeing Fishing Picnic Area Carry-in Boat landing
10 Pelishek-Tiffany Nature Trail Heading East out of Clinton, this former RR bed connects 5.5 mi. to Allen's Grove Walworth Co.	Hiking Biking Snowmobiling Bridle Path
11 Royce Dallman Park Just north of Milton, this little park provides access to Lake Koshkonong.	Boat Landing Canoeing Fishing Picnic Area
12 Schollmeyer Park This park near Beloit is a great place to enjoy fishing or canoeing on Turtle Creek.	Canoeing Fishing
13 Sugar River Park & Avon Park 16 Launch your boat or cast your line into the Sugar River from these parks in the southwestern corner of the county.	Boat Landing Canoeing Fishing Wildlife Area
14 Sweet-Allyn Park Rock County's first park, Sweet-Allyn Park in Shopiere borders Turtle Creek and offers many recreational activities, including a softball diamond.	Picnic Shelter Playground Equipment Canoeing Fishing Ball Diamond Carry-in Boat Landing
15 Walt Lindemann Sportsman's Park Just north of Janesville, this park is home to a white-tailed deer display and is a great place to bring the kids for a picnic and to play.	Picnic Shelter Wildlife Display Playground Picnic Area
17 Ice Age Park 3.4 acre park in Harmony Township that is undeveloped at this time. Provides access to a 4.2 mile multi-use rail trail between Janesville and Milton.	
18 Koshkonong Lake Access 5.85 acre park in Milton Township that is undeveloped at this time.	
19 Turtle Creek Parkway County Park Fishing, canoe launch, Tiffany five-arch bridge, wildlife viewing, building rental for conferences, weddings, etc.	
20 Miller Farm Wetlands Conservancy Undeveloped 54-acre park adjacent to the Yahara River where it convenes with the Rock River. Part of the parcel is in the Wetland Reserve Program. Shore fishing, bird watching, and wildlife viewing available.	
21 Turtle Creek Access @ 140 1.52-acre park provides access to Turtle Creek for kayaking or canoeing. Fishing and bald eagles are attractors to this little gem of Rock County.	
22 Rock River Heritage Park 178-acre park is open but all buildings are closed. Improvements continue for 2023 planned opening.	

Afton

Afton's early settlers came by the Chicago & Northwestern Railway in the mid-1800s to this tiny community between Janesville and Beloit. Today, you may just find a piece of history for yourself while roaming the area.

Cooksville

When the railroad bypassed this community in the 1860s, Cooksville's growth stopped and it soon became "the town time forgot." The brick homes built by immigrants from New England, the British Isles and later Norway still stand much as they did more than a hundred years ago. More than **50 sites are on the National Register of Historic Places**. Rustic Road 68 (Riley Road) will take you to Highway 59 and Cooksville.

Emerald Grove

Experience the ambiance of this little village by shopping for antiques, picnicking in **Emerald Grove Park** or by taking in a round at **Cecilia's Golf Course**.

Footville

In 1931, **Footville Community Park** became home to the first lighted softball park in the nation. Today, visitors to Footville still enjoy picnics, playing in the park, or stopping for a bite to eat in the historic downtown. Experience an old-fashioned **auction** or explore local history at the **Luther Valley Historical Society**.

Milton

Rustic Serns Road winds north out of Milton from John Paul Rd. to County N. Enjoy one of Rock County's most scenic routes.

Orfordville

Enjoy the outdoors at **Purdy Park** or shop the antique stores along this scenic stretch of Old Highway 11.

Tiffany-Shopiere

Visit Shopiere's **Sweet-Allyn Park**, wade in **Turtle Creek**, and view the **Shopiere Memorial four-face clock** dedicated to area veterans. Down Smith Road a few miles east of town, the picturesque **Tiffany Bridge**, spanning Turtle Creek since 1869, is the nation's only hand-built, five-arch stone railway bridge.

The Great Wisconsin Birding and Nature Trail

The Great Wisconsin Birding and Nature Trail extends into our regional area and you'll find 5 of the 71 established nature trails in Wisconsin right here in Rock County! Learn more about all the trails in Wisconsin at www.wisconsinbirds.org/trail

GRASLands

The Green-Rock Audubon Society offers year round use of their groomed trails to hikers and nature lovers. The 16-acre **Androne Woods** parcel (42.5555/-89.1443), the 40-acre **Cleophas Reserve** (42.5555/-89.1328) and the 24-acre **Gabower-Reilly Reserve** (42.5554/-89.1313) are located on W. Cleophas Rd. near Beloit, WI. The 67-acre **Spring Creek Reserve** (42.5257/-89.0955) has 2-1/4 miles of hiking trails through restored prairie and wetlands.

- **Big Hill Park**, Beloit
- **Rock River Prairie State Natural Area**, Beloit
- **Avon Bottoms State Wildlife & State Natural Area**, Beloit
- **Cook Memorial Arboretum**, Janesville
- **Storrs Lake & Lima Marsh State Wildlife Areas**, Milton

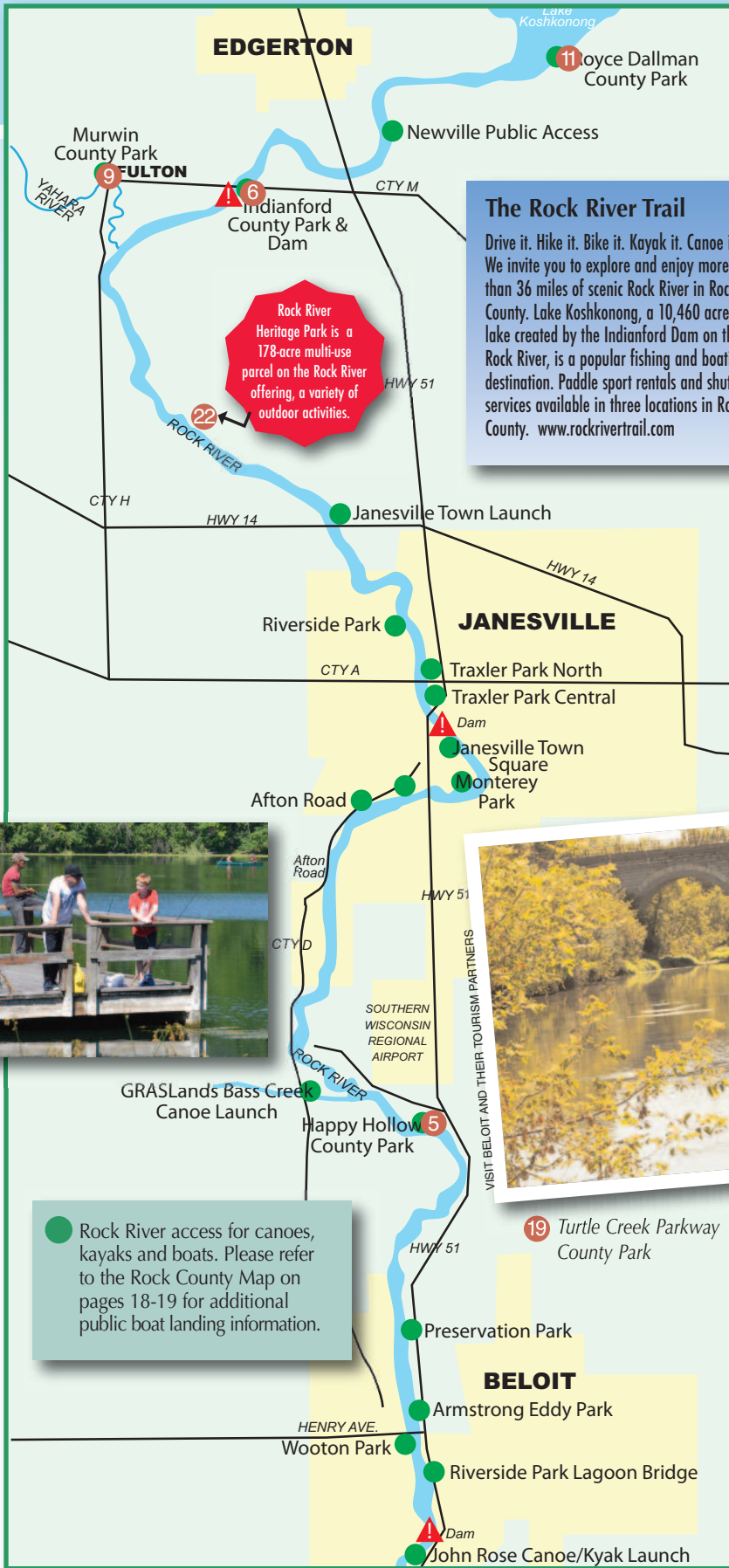


PICNIC SHELTER PER DAY WITH ELECTRICITY		
	Resident	Non-Resident
Carver-Roehl Park	100.00	125.00
Carver-Roehl Gazebo	50.00	75.00
W.L. Sportsman's Park	100.00	125.00
Beckman Mill Park	100.00	125.00
Gibbs Lake Park	100.00	125.00
Royce Dallman	100.00	125.00
Sweet-Allyn Park	100.00	125.00
Lee Park - no electricity	50.00	75.00
Magnolia Bluff Park - no shelter or electricity	50.00	75.00
Turtle Creek Parkway-1 weekday	200.00	250.00 (Mon-Thurs)
Turtle Creek Parkway-1 weekend day	300.00	350.00 (Fri-Sun)
Turtle Creek Parkway-3-day weekend	750.00	900.00 (Fri-Sun)
Beer/Wine Permit w/out shelter	25.00	30.00

Key deposit/clean up deposit may be required based on past experience. \$50 per reservation, paid by check to be returned with satisfactory report on cleanup. No additional charge for Beer/Wine Permit.

Payments due 1 week after reservation is made. Reservations should be made at least 1 week in advance. Shelter permits include free beer/wine permit. Holding fee of \$50 is required for reservations made 1-3 years in advance.

Trails on Water



The Rock River Trail
 Drive it. Hike it. Bike it. Kayak it. Canoe it!
 We invite you to explore and enjoy more than 36 miles of scenic Rock River in Rock County. Lake Koshkonong, a 10,460 acre lake created by the Indianford Dam on the Rock River, is a popular fishing and boating destination. Paddle sport rentals and shuttle services available in three locations in Rock County. www.rockrivertrail.com

Rock River Heritage Park is a 178-acre multi-use parcel on the Rock River offering a variety of outdoor activities.

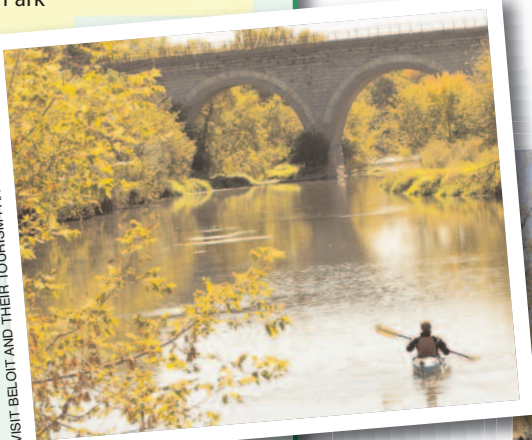
● Rock River access for canoes, kayaks and boats. Please refer to the Rock County Map on pages 18-19 for additional public boat landing information.



©GARRETT HACKBARTH



8 Magnolia Bluff County Park



VISIT BELOIT AND THEIR TOURISM PARTNERS



19 Turtle Creek Parkway County Park



AMY FRIEND

2 Beckman Mill Park

VISIT BELOIT AND THEIR TOURISM PARTNERS

Trails on Water

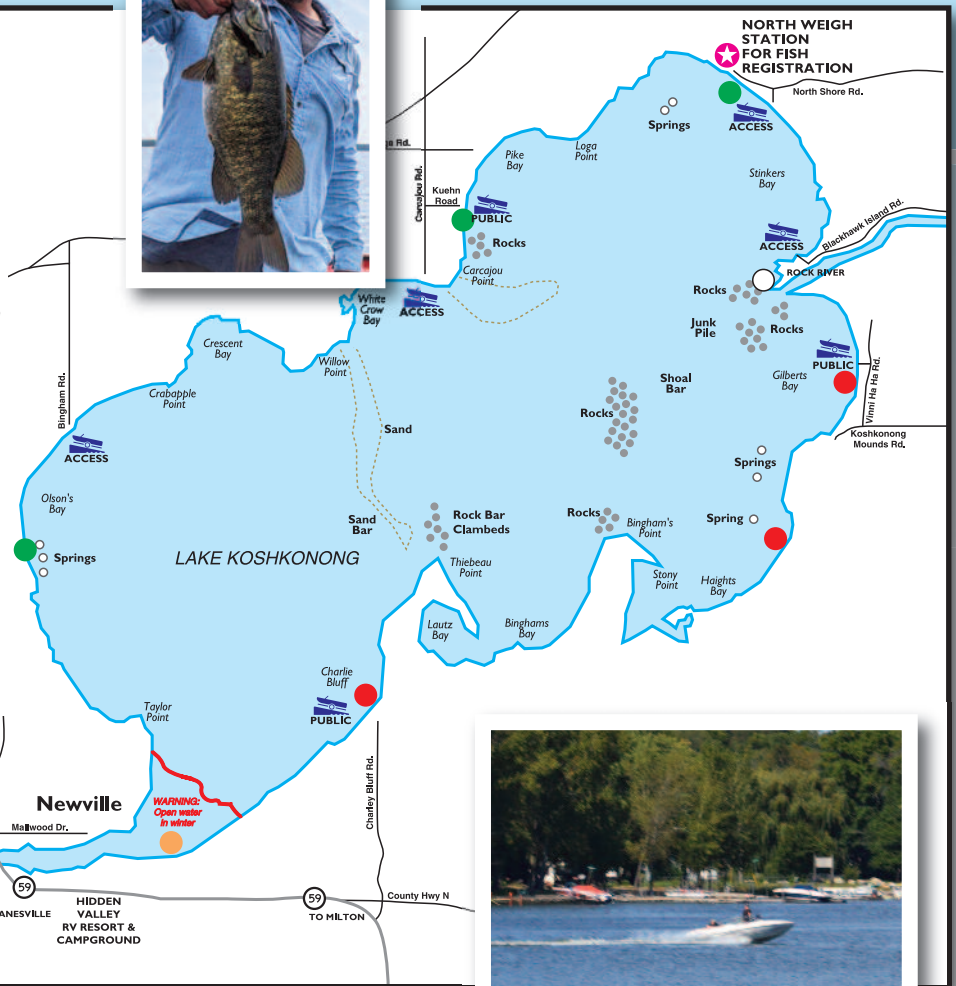
Slow down as you paddle past landscapes created by the glaciers thousands of years ago or watch the sunrise over the shoreline as you troll or ice fish for walleyes.

These waterways invite fishing and canoeing, and some allow for motorized watercraft, waterskiing, sailing and sailboarding. Some areas offering easy access are listed in the county parks chart on page 13. Also reference the Rock County map on pages 18-19 for additional information.

The Wisconsin Department of Natural Resources office is located in Janesville at 2514 Morse St., or call 608-743-4800. Visit their website at: www.dnr.state.wi.us



Lake Koshkonong is a summer paradise for fishing, boating, swimming, and relaxation.



MAP LEGEND

- ● ● Shore Beacons
- Boat Access Ramps
Some may charge a nominal fee



Fishing in Rock County

Water is one of the main features in Rock County Parks — thirteen parks have water access on seven different bodies of water. The system includes several canoe / kayak landings, boat launches, and fishing piers; so fishing is one of the main ways to recreate in the park system. Rock County Parks believes that it is important for youth and families to get outside and explore nature while staying close to home.

NAME	Bluegill	Catfish	Crappie	LM Bass	Pike	SM Bass	Trout	Walleye	W Bass
Allen Creek									
Clear Lake									
Gibbs Lake									
Kiwanis Pond									
Lake Koshkonong									
Lake Leota									
Raccoon Creek									
Rock River									
Storrs Lake									
Sugar River									
Turtle Creek									
Yahara River									

Swimming

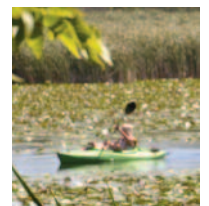
- Beloit-Krueger Municipal Pool - 608-364-2877
- Edgerton- City Pool - 608-884-3232
- Evansville-Veteran's Memorial Pool - 608-882-2276
- Janesville - Rockport Pool - 752-6747
- Palmer Park Wading Pool - 608-755-3030
- Lions Beach - 608-755-3030
- Riverside Park Splash Pad - 608-755-3030
- Milton - Goodrich Square Splash Pad - 608-868-6900

Kayaking/Canoeing Boating

- Kiwanis Pond
- Lake Koshkonong
- Raccoon Creek
- Rock River
- Sugar River
- Turtle Creek
- Yahara River
- Clear Lake
- Gibbs Lake
- Kiwanis Pond
- Lake Koshkonong
- Lake Leota
- Rock River
- Storrs Lake

Pontoon Boat Rental

- Anchor, Newville
- Floating Toy Pontoon Rentals, Newville



Fishing licenses available at the DNR Service Center - 2514 Morse St., Janesville - 608-743-4800, the Rock County Court House, 51 S. Main St., Janesville, and most sporting good and discount stores.

AMY FRIEND



Gibbs Lake County Park offers extensive groomed trails for riding, hiking or cross-country skiing.

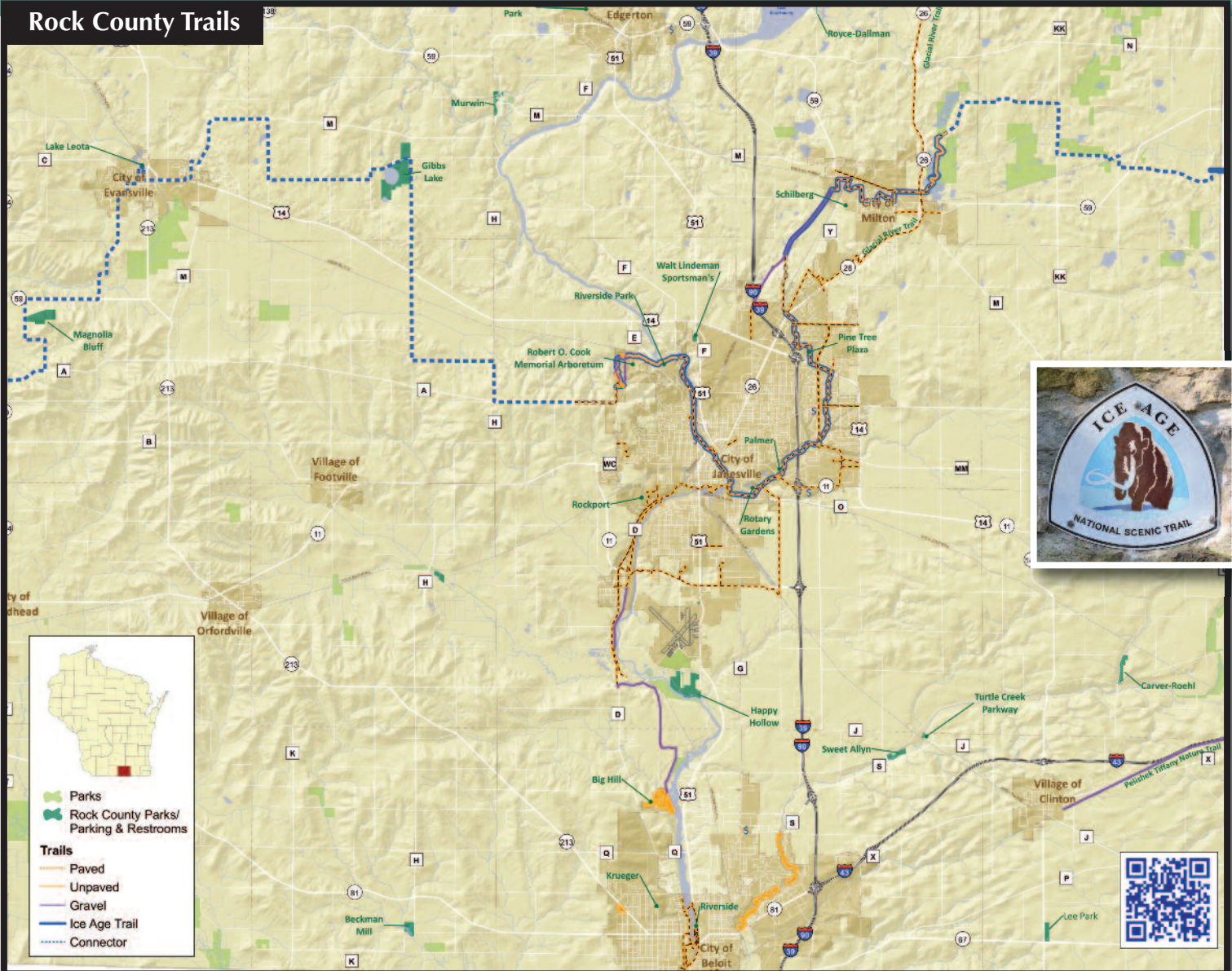


GARRETT HACKBARTH

Rock County's portion of the scenic Ice Age Trail meanders through woods, meadows and outcroppings.

Rock County offers outdoor recreational activities for the whole family.

Rock County Trails





Cooksville

Clinton

Town of Beloit

Known as “the town that time forgot” because technology bypassed the community around the beginning of the 20th century, Cooksville is a jewel of well-preserved mid-19th century **Greek Revival and Gothic Revival** architecture. Approximately 35 buildings and historic sites comprise The Cooksville Historic District.



East of Cooksville, the Yahara River offers lazy, scenic paddling for canoers and kayakers of all ages and abilities.

Located one block north of the Highway 59 and 138 intersection, and one block south of **Badfish Creek**, the **Cooksville Country Store** is listed on the National Registry of Historic Places. Thought to be Wisconsin’s oldest grocery store, until recently, it had been in operation since 1846.

Drive or walk the tidy neighborhoods and imagine what it was like to live in a tiny rural community or stay at cooksvillefarmhouseinn.com.

If hiking is your thing, come and enjoy the **Pelishak-Tiffany Nature Trail** that starts in the Village and goes east into Walworth County, or hike or cross-country ski through **Carver-Roehl County Park**, where the magnificent geological formations provide a scenic backdrop.

Just south of Clinton, **Lee Park** is a great spot for a family picnic. The park features a nature trail that winds through the scenic woods. Visit this friendly community the first Friday in December for the **Winter Wonderland Festival**, including seasonal activities and the famous Lighted Parade.



AMY FRIEND

Located between the cities of Beloit and Janesville, the Town of Beloit presents visitors with a healthy indulgence of rural charm, as well as easy access to the more metropolitan advantages of its larger neighbors.

Boating and water sports have a long tradition in the Town of Beloit, as the **Rock River** provides abundant opportunity for water oriented recreation. The community’s **Armstrong Eddy** and **Preservation Parks** both have boat launching facilities and ample parking for visitors who wish to enjoy the river’s scenery, water sports and fishing. You can access both park locations from U.S. Highway 51.



Autorama is one of the Midwest’s largest car shows.

A number of fine restaurants offer a variety of dining possibilities along the river for the benefit and convenience of visitors, including casual fine dining, the popular Friday evening fish fry and Wisconsin Supper Club experiences. Wild turkeys are often seen near the **Wisconsin Department of Natural Resources Rock River Prairie Preserve**. Situated on the rolling terrace above the Rock River the preserve contains large populations of prairie forbs and grasses including several rare and threatened plants. In May, large numbers of cream wild indigo and rock sandwort bloom while in September the hills are covered with prairie gentian.

Orfordville

The community of Orfordville in western Rock County is surrounded by rolling farmland and is located at the junction of U.S. Highway 11 and State Highway 213. Picnic or let off some steam on the tennis courts, baseball diamond and playground at **Purdy Park**. Stop for lunch and browse the quaint shops downtown before taking the scenic drive down Old Highway 11 to nearby Footville. In winter, take the **snowmobile route** to get to the same place.

Hunting opportunities are available at public hunting grounds in the area. The annual holiday parade, held the first Saturday in December, is a festive way to celebrate the season.



Airing of the Quilts celebration and the Father’s Day Parade are annual events in the community of Orfordville.

Rock County Map

Visitor Information Contacts

Visit Beloit, 656 Pleasant Ave., Beloit, 8:30 am-5 pm M-F, 608-365-4838
 e-mail: info@visitbeloit.com www.visitbeloit.com
Wisconsin Welcome Center-Beloit, NB I-39/WB I-90, Rest Area 22 @ Mile Marker 187, Beloit, WI 53511, 608-365-8344
 Memorial Day weekend – Labor Day weekend: Mon.-Sat. 9 am – 5 pm & Sun. 10 am – 3 pm
 May, Sept., Oct: Mon.-Sat. 9 am – 4 pm & Sun. 10 am – 3 pm;
 Nov. 1-April 30: Tue.-Sat., 9 am – 4 pm, Closed Sundays and Mondays



Clinton Chamber of Commerce
 P.O. Box 375 Clinton, WI 53525 www.clintonwi.us
Edgerton Chamber of Commerce
 P.O. Box 5 20 S. Main Street Edgerton, WI 53534-0005
 608-884-4408 1-888-298-4408
 e-mail: info@edgertonchamber.com
www.edgertonwichamber.com
Evansville Chamber of Commerce
 P.O. Box 588, Evansville, WI 53536-0588 608-882-5131
evansvillechamber@gmail.com www.evansvillechamber.org
Janesville Area Convention & Visitors Bureau
 20 S. Main St., Suite #11 Janesville, WI 53545
 608-757-3171 or 800-48-PARKS
 e-mail: visit@janesvillecvb.com www.janesvillecvb.com

Janesville Visitor Information Center
 Palmer Park East Pavilion.
 Mid May - Mid September Hours: 9 AM-5 PM Daily

Milton Area Chamber of Commerce
 819 E. High St., Suite 4, P.O. Box 222 Milton, WI 53563-0222
 608-868-6222 e-mail: execdir@visitmilton.com
www.visitmilton.com

Orfordville Chamber of Commerce
 Bank of Brodhead 303 E. Spring St.
 Orfordville, WI 53576
 608-879-2911 www.orfordville.org

Rock County Parks Division
 3715 Neville Road Janesville, WI 53545
 608-757-5450 www.co.rock.wi.us

Rock County Tourism Council
 P.O. Box 8041 Janesville, WI 53547-8041
www.rockcounty.org

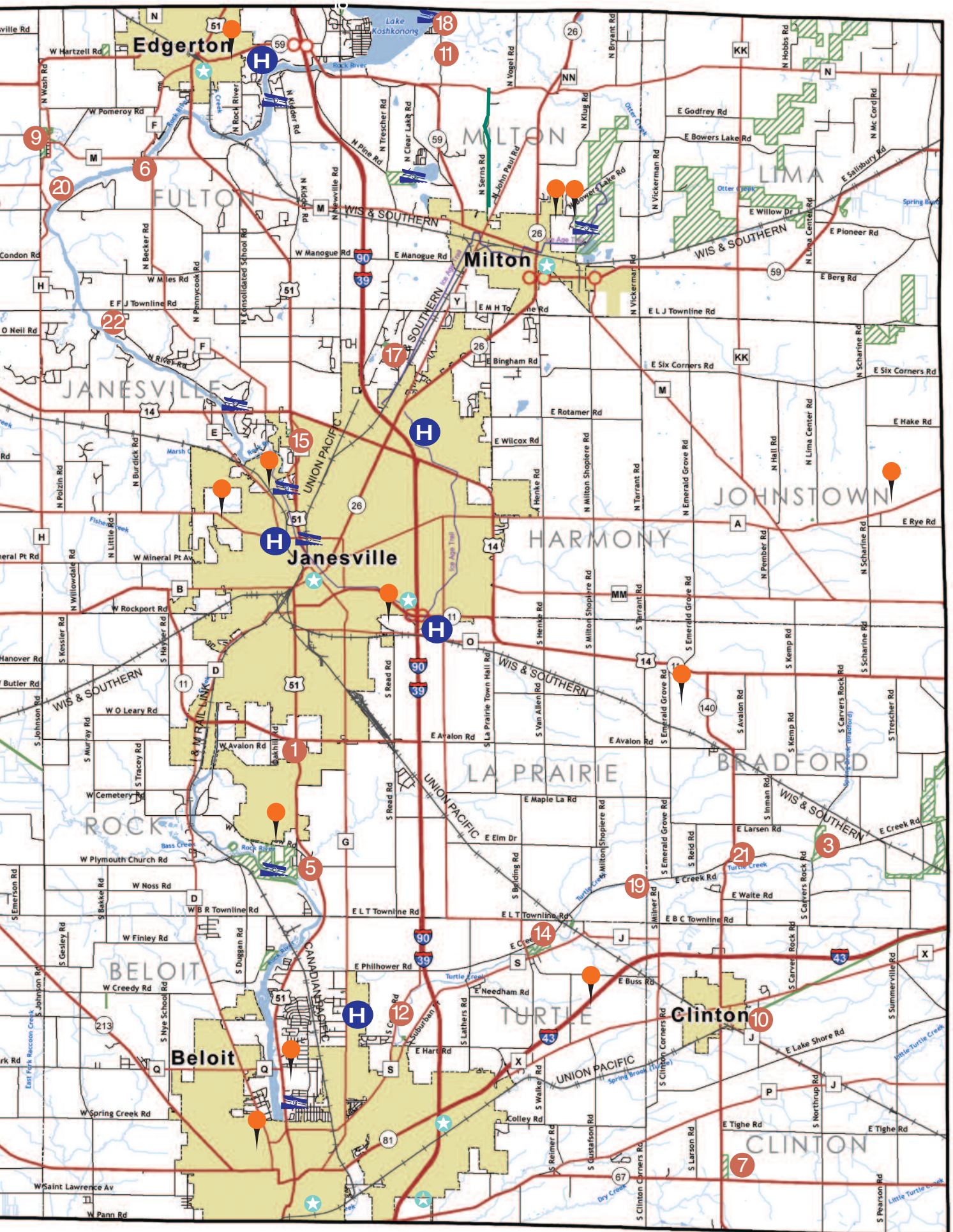
Wisconsin Fall Color & Ski/Snow Conditions
 608-266-2161 or 800-432-TRIP (8747)
www.travelwisconsin.com

Road Conditions
 For Wisconsin road conditions call 511 or www.511.com

MAP LEGEND

- County Parks - See page 13
- Public Golf Courses - See page 7
- Public Boat Landing
- County Bikeway - See page 12
- Designated County Bikeway
- Rustic Roads - See page 13
- Ice Age Trail - Milton & Janesville Segments
- H Hospital/ER
- I Information Center







Beloit Ongoing Events

- Jan 27-29 **Beloit Winterfest**
beloitrecreation.com/beloit-winterfest
- Feb 24 - **Beloit International Film Festival (BIFF)**
Mar 5 beloitfilmfest.org
- Feb 25 **Maple Sugar Fest** weltycenter.org
- Apr-Sep **Sky Carp Baseball** milb.com/beloit
- April 8 **Downtown Easter Eggstravaganza**
downtownbeloit.com
- April 22 **Spring Wine Walk** downtownbeloit.com
- May 12-14 **Team World Horseshoes Tournament**
- May 26- **Fridays in the Park** downtownbeloit.com
Sep 22
- May-Oct **Beloit Farmers' Market every Saturday**
downtownbeloit.com
- May-Oct **Beckman Mill Guided Tours every Saturday and Sunday** beckmanmill.org
- June 12- **Dancing at Harry's Place every other**
Aug 28 **Monday** friendsofriverfront.com
- June 16- **Music at Harry's Place Most Friday**
Aug 25 **Evenings** friendsofriverfront.com
- June 17 **Juneteenth Celebrations**
- July 4 **4th of July Concert and Fireworks**
- July 15 **Lager Than Life Beer Festival** visitbeloit.com
- Aug 4-5 **Street Dance & Sidewalk Sales**
downtownbeloit.com
- Aug 12 **US Kubb Open** kubbunited.com
- Aug 19 **Beloit Dirty Dash** beloitrecreation.com
- Sep 10 **Heritage Sunday at Beckman Mill**
beckmanmill.org
- Sep 17 **Autorama** beloitautorama.com
- Sep 23 **Oktoberfest** downtownbeloit.com
- Oct 14 **Fall Wine Walk** downtownbeloit.com
- Oct 18 **Taste of the Chamber**
greaterbeloitichamber.org
- Oct 28 **Halloween Costume Parade & Party**
downtownbeloit.com
- Nov-April **Beloit Winter Farmers' Market - Saturdays**
downtownbeloit.com
- Nov 24 **Grand Lighted Holiday Parade**
downtownbeloit.com
- Nov 25 **Small Business Saturday**
downtownbeloit.com
- Dec 1 **Holidazzle** downtownbeloit.com

Beloit . . . Where Stories Begin

Beloit, a small but innovative city, is located on the mid-point of the **Rock River Trail**. Discover how it sizzles with legendary hospitality, numerous events and cultural attractions, and a bustling downtown—bursting with eclectic shops, cafés, restaurants, boutique hotels, and the **state's second-largest farmers' market**.

Giving a nod to its industrial past and continuing its renaissance, Beloit will surprise and delight you while delivering you an experience different from the rest.

Historically preserved buildings, a decorative gantry, and a brick-paved main street showcase the downtown as a **Wisconsin Main Street** success story. There are several events and festivities throughout the year including **Street Dance**, **Oktoberfest**, two **Wine Walks**, and a **Grand Lighted Holiday Parade**, just to name a few. **Beloit College** offers many cultural opportunities including the **Wright Museum of Art**, the **Logan Museum of Anthropology**, concerts, dance performances, theater productions and athletic events. This nationally recognized liberal arts college is an integral and historical part of the community.

Live music can be enjoyed nearly every night of the week at various venues throughout the city and along the riverfront during the summer months. Performing and visual arts begin with the **Beloit Art Center** and transcend into such events as, **Holidazzle** and **BIFF (Beloit International Film Festival)**. Celebrating its 18th year, the Beloit International Film Festival has

brought glitz and glimmer to wintertime in Wisconsin. Every February, residents and visitors fill local Beloit venues to experience independent films and interact with filmmakers, who come from as far away as Europe, Asia, and South America. More than 100 features, shorts, and documentaries pay tribute to the power of film around the world.



The annual Street Dance, Halloween Costume Parade and Oktoberfest events provide family entertainment.



Discover the historic 5-arch stone bridge on Turtle Creek.



The 18th Annual Beloit International Film Festival invites participants to experience the latest independent films by international directors.



Visit Beloit

656 Pleasant St., Beloit, WI
8:30am-5pm M-F 608-365-4838
e-mail: info@visitbeloit.com
www.visitbeloit.com



All photographs courtesy of Visit Beloit and their tourism partners.

The Beloit Sky Carp, Beloit Minor League Baseball, the High-A affiliate of the Miami Marlins, officially unveiled their new team identity as the Beloit Sky Carp. Fans can now enjoy the new, \$37 million, downtown ABC Supply Stadium that opened in late summer 2021.

For a day trip of fun or for a long weekend getaway, Beloit offers many cultural, entertaining, and certainly scenic trips with the best in original dining, shopping, and performing arts. Gather your girlfriends, family, or friends and head to Beloit. You'll have a great time and create memories that will last a lifetime.



Beloit is bursting with outdoor adventures, live entertainment, Minor League Baseball, festivals, history, and local culture.



Beloit provides great options for gathering and celebrating special occasions or holidays.



Explore the music scene with live music, night life, dancing, festivals, and outdoor concerts.





shop...



explore...



dine...



bask....

plan your trip today at downtownbeloit.com

DOWNTOWN BELOIT

All-America City Award Winner • Most Romantic Main Street Award Winner

Beloit Area Points of Interest

- 1 ABC Supply Stadium - Sky Carp Baseball
- 2 Beckman Mill
- 3 Beloit College
- 4 Beloit Farmers Market
- 5 Preservation Park
- 6 Riverside Park
- 7 Visit Beloit
- 8 Wisconsin Welcome Center-Beloit
(Most locations are approximate)

Beloit's downtown plays host to an award-winning farmers' market, the BIFF film festival, music events, dances, holiday parades, specialty shopping, restaurants, museums and lodging.



Be sure to check Facebook pages or websites for updates or cancellations.



Community Events

- February 11 Chocolate Extravaganza - Creekside Place
- February 18 The Heat is On! Chili Cookoff - Creekside Place
- March 3-4 Vintage Shop Hop - Citywide
- March 5 FFA Farm Toy Show - School District Field House
- April 21-23 Disney's Beauty and the Beast Musical - PAC
- May 4 Creekside Cruise Night - Creekside Place
- May 10 Music on the Side - Creekside Place
- May 12 Art Crawl - Downtown Evansville
- May 29 Memorial Day Recognition & Rally in the Alley - Citywide/VFW
- June 1 Creekside Cruise Night - Creekside Place
- June 14 Music on the Side - Creekside Place
- June 30 Ice Cream Social - TBD
- June 30 Fourth of July Festival - Leonard-Leota Park
- July 1-2 & 4 Fourth of July Festival - Leonard-Leota Park
- July 4 5K/10K/1 Mile Fun Run/Walk - Leonard-Leota Park
- July 6 Creekside Cruise Night - Creekside Place
- July 12 Music on the Side - Creekside Place
- August 3 Creekside Cruise Night - Creekside Place
- August 4-5 Citywide Garage Sales
- August 9 Music on the Side - Creekside Place
- August 10 Evansville Night Out - Leonard-Leota Park
- August 27 History in the Park - Leonard-Leota Park
- September TBD Ladies Night Out - Downtown
- September 7 Creekside Cruise Night - Creekside Place
- September 16 CreekFest - Creekside Place
- October 6-7 Vintage Shop Hop - Citywide
- November 17-18 Olde Fashioned Christmas Celebration - Downtown Evansville
- December 2 Craft Fair - J.C. McKenna Middle School

See the Calendar of Events on pages 8-11 for more detailed information on Evansville's Community Events.



EVANSVILLE CHAMBER



MARIAH CALLEY



KEVIN MIKULAJ



MARIAH CALLEY

Evansville *History in Motion*

Shop, bike, fish, stroll around . . . so much variety in and around Evansville! Enjoy a picnic lunch or bring your kayak to the lake in pretty **Leonard-Leota Park**. Roam rustic roads and follow a map showing beautiful urban and rural barn quilt folk art.



BRIAN CARTER

Settled in 1839, Evansville has "the finest collection of 1840s to 1915 architecture of any small town in Wisconsin," according to the Wisconsin Historical Society. A free map shows dozens of grand architectural styles in a highly walkable area. The map is part of the free Walker's Guide tour book available at many downtown locations, or by writing to City Hall, PO Box 529, Evansville, WI 53536. Strolling through the neighborhoods, you might occasionally



CHRIS PATTERSON

encounter live music concerts on porches, courtesy of **Evansville Underground Music**. Then amble back downtown, where you can enjoy dining and shopping for vintage, antique, repurposed and consigned items.

Historic Leonard-Leota Park is home to a spring-fed lake, nine-hole disc golf course, covered foot bridge and history museum. During the **Fourth of July** at the park, fireworks command great admiration. Year-round, bird watchers crow about the avian variety who call the park home. Birdies of another kind are found at the popular 18-hole public golf course at **Evansville Golf Club**. Nearby **Magnolia Bluff County Park** has hiking and equestrian trails, with a view for miles.

For more information about how to enjoy the best that Evansville offers—including places to stay, eat and play—please visit www.ci.evansville.wi.gov or www.evansvillechamber.org. Contact the Chamber at 608-882-5131 or EvansvilleChamber@gmail.com



MARIAH CALLEY



MARIAH CALLEY

Exploring Magnolia Bluff (top photo) or the city's parks and historic neighborhoods are popular outdoor activities in the Evansville area.



EDGERTON CHAMBER

JIM BUSHELLE

Edgerton

You'll find Edgerton's charming downtown to be a treasure trove of history, one of Rock County's gems. From its historic buildings, such as the **Railroad Depot** and tobacco warehouses, to its quaint shops, parks and festivals, Edgerton beckons you to visit, explore and enjoy!

A beloved book "Rascal" written in 1963 has made the **Sterling North House and Museum** in Edgerton an international destination. The autobiography by Sterling North, recounts his youthful adventures with adopting a baby raccoon at the turn of the century. The well-loved novel was also made into a Disney movie by the same name.

Edgerton's old-fashioned brick storefronts are scenic backdrops for its wealth of historic sites and festivals. If you work up an appetite while exploring downtown, or riding the bike trails, stop at one of the many pubs or restaurants in the area. You can follow it up by enjoying a production in the new state-of-the-art **Performing Arts Center**.

Be sure to stop in to see the **WPA Mural** in the Post Office, the **Edgerton Area History Museum** in the railroad depot, or the restored 1800s log cabin in **Clay Pit Heritage Park**. Take the family to cool off at the **Edgerton Aquatic Center**, a great facility for all ages that features a playground, graduated pool and sand volleyball.

Edgerton offers many special reasons to visit throughout the year. In the summer enjoy the weekly **Edgerton Community Farmers Market**, **Tobacco Heritage Days** and **Rock River Threshere**, followed by **Chilimania**. Fall brings the **Sterling North Book & Film Festival** in October. Winter festivities end the year with the downtown **Christmas Tree lighting** and the **Snowflake Craft Fair**.

See pages 4-7 for more information on:

- Sterling North Home and Museum
- Clay Pit Heritage Park Log Cabin
- Edgerton Area History Museum



For more information
Edgerton Area Chamber of Commerce
20 S. Main St. 608-884-4408
www.edgertonwichamber.com
To see current active community events visit
visitedgertonwi.com

Indianford/Fulton

Once the spot where Chief Blackhawk and his braves crossed the Rock River, the rushing waters below the Indianford dam may well be the best fishing spot in the county. Standing along the river bank in scenic **Indianford Park**, anglers catch impressive northern pike or walleye, as well as an abundance of crappie, catfish, white bass and



EDGERTON CHAMBER

American White Pelicans and Sandhill Cranes. **Newville** provides access to Lake Koshkonong and the Rock River and has several places to launch boats at public launches and marinas. It is conveniently located on Interstate 90-39 at highway 59, on the northern border of Rock County. The area offers a variety of dining experiences, including



The power of steam will be displayed at the **Rock River Threshere**, a living history event, on Labor Day weekend.



Murwin Park, on the Yahara River in Fulton, attracts quiet sport practitioners.

bluegills. The Fulton Congregational Church, listed on the National Historic Register, and the restored school house next door offer a glimpse into yesteryear.

Newville and Lake Koshkonong

Lake Koshkonong, one of Wisconsin's largest lakes, is a vacationers' playground all year, with water sports, fishing and boating in summer, and snowmobiling and ice fishing in the winter. Lake Koshkonong is over 10,460 acres, and has a maximum depth of 7 feet. Anglers enjoy fishing for northern pike or walleye, as well as crappie, catfish, white bass and bluegills. The lake and surrounding wetlands are a haven to multitudes of birds and wildlife, including

Wisconsin Supper Clubs, with many of the area restaurants and bars located right on the water with boat docks. For a leisurely time, rent a pontoon boat and cruise the river and the lake. If camping is your pleasure, the Lake Koshkonong area offers more campsites than any other area in Wisconsin. Other lodging opportunities in the Lake Koshkonong area include Bed and Breakfasts, hotels and vacation rentals. Whether you choose to drop a line into the water, or drop yourself into a lounge chair; groove to some live music, or revel in the quiet of the lake sunrise, you'll find Lake Koshkonong to be the perfect Wisconsin getaway.

Be sure to check Facebook pages or websites for updates or cancellations.

*I-90
at Hwy 59
(exit 163)*

NEWVILLE TRAVEL CENTER

PUMPS OPEN 24 HOURS A DAY

Mobil Gasoline & Diesel Fuel • Live Bait & Tackle

- Newly Remodeled Store
- Ice • Soda
- Groceries
- Coffee • Donuts
- Fresh Deli
- Grill Accessories
- Charcoal
- Pet Food
- Propane Tank Exchange
- Camping Supplies
- Full Liquor Store
- New Walk-In Beer Cave for Cold Beer

*Red Worms
Night Crawlers Spikes
Leeches Wax Worms
Tackle*



In Newville, crowds gather twice a year to enjoy the fleeting days of fall and celebrate the arrival of spring.



EDGERTON CHAMBER

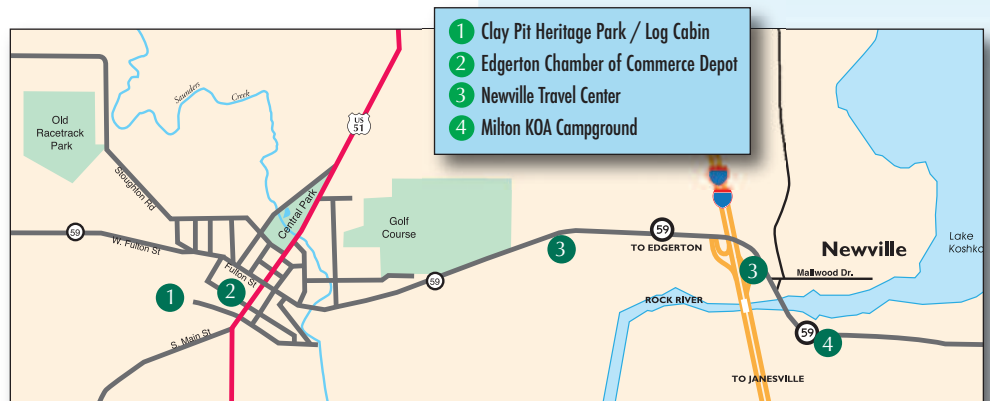
The annual Sterling North Book and Film Festival has attracted notable children's book authors/illustrators, including Chris Van Allsburg.



Lake Koshkonong and the Rock River are watersport playgrounds facilitating power boating, sailing, jet-skiing, water skiing and fishing activities.



Antique and collectible shops line Edgerton's downtown streets, attracting customers looking for one-of-a-kind objects.





JANESVILLE

Wisconsin's Great Outside

janesvillecvb.com

Recharge your spirit as you explore

Nature

Hike, bike, snowshoe or cross-country ski on Janesville's extensive trail system. Many species of native trees, plants, and wildlife can be found in these areas.

Public Art Trail

Janesville is home to more than 60 pieces of outdoor public art including 28 large-scale murals, plus sculptures, markers and memorials. Download the brochure at janesvillecvb.com to explore the trail.

Garden Art Project

Visit the award-winning Rotary Botanical Gardens during the summer to explore the annual Garden Art Exhibit. From May to September handcrafted wooden shapes created by Garden volunteers and decorated by local artists are displayed throughout the Gardens.

Dining & Shopping

Discover Janesville's charming downtown where you'll find lots of options for dining and shopping. Many local businesses offer online ordering/shopping, curbside and delivery options.

Birding

Get outside and enjoy Janesville's most scenic natural areas, with a mix of wetland and forested areas that draw both birds and birders. Janesville achieved Bird City designation in 2013 from Bird City Wisconsin.



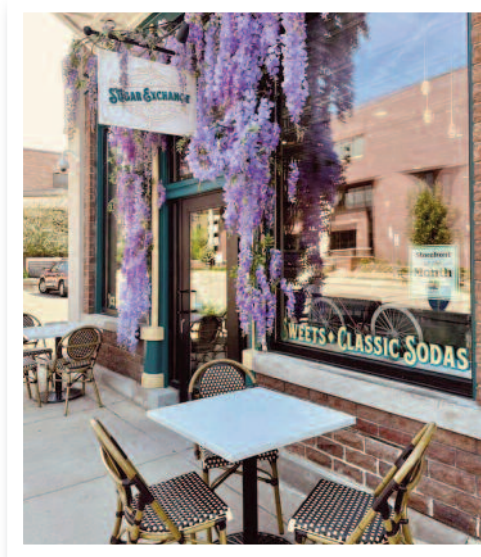
©STEPHEN PICKERING



©HILS MARSHA MOOD

Explore hundreds of acres of tranquil parkland and miles of peaceful trails. Take in the breathtaking beauty of our award-winning botanical garden, dine and shop in our charming downtown, and experience our 13 historic districts. Savor a craft beer or locally made wine and relax at one of our welcoming and affordable lodging options. Sit back and immerse yourself in live theater or feel the exhilaration as you watch a performance by one of the world's best water-ski show teams.

Bring the family and enjoy the fun at any of our many festivals and special events including the **Tour of America's Dairyland Janesville Town Square Gran Prix Bike Race**, **Tallman Arts Festival**, **Rotary Pie Ride**, **Art Infusion**, **Janesville's Jolly Jingle** and the **Holiday Light Show**.



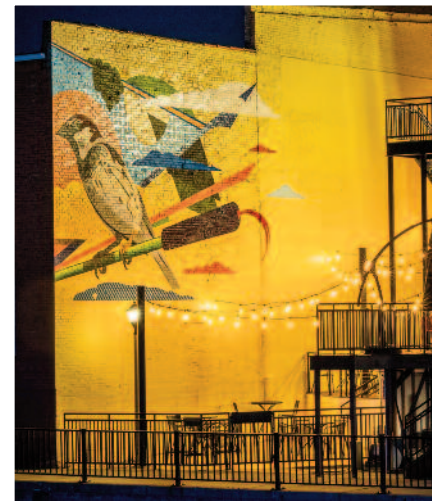
©THE SUGAR EXCHANGE

The Sugar Exchange is your sugar destination in downtown Janesville, serving homemade sweets, classic candies, handcrafted classic soda, ice cream, shakes and s'mores charcuterie trays.



©KIM KOHOLEK

The Rock Aqua Jays water ski show team performs throughout summer.



©FULL SPECTRUM PHOTOGRAPHY

Art Infusion provides mural artists the opportunity to exhibit their skills and creative imaginations.

Wisconsin's Great Outside

Janesville is all about savoring the outdoors. Take advantage of our 60 parks including **Traxler Park**, home to the **Rock Aqua Jays Water Ski Show Team** and **Palmer Park**, home to **CAMDEN Playground**, one of the region's largest accessible playgrounds. At 246 acres, **Rockport Park** is Janesville's largest park, with lots of activities for kids and teens. It includes the **Peace Park Playground** and Pavilion. **Riverside Park** offers opportunities to enjoy pickleball, shuffleboard, disc



©FULL SPECTRUM PHOTOGRAPHY

Janesville Area Convention & Visitors Bureau

20 S. Main St., Suite #11

Janesville, WI 53545

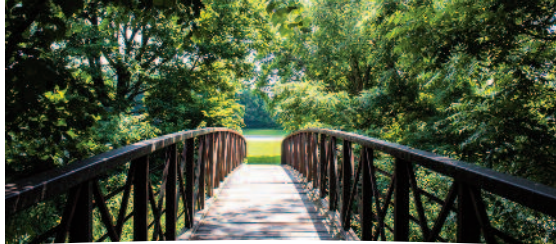
608-757-3171 800-487-2757

www.janesvillecvb.com

visit@janesvillecvb.com



©FULL SPECTRUM PHOTOGRAPHY



©FULL SPECTRUM PHOTOGRAPHY



golf and river access. It's also home to the **Devil's Staircase**, a segment of the Ice Age Trail. Our 30 miles of trails, including a portion of **Wisconsin's Ice Age Trail**, connect many of our neighborhoods, parks and attractions. **Skelly's Farm Market** offers three seasons of fun. **Rotary Botanical Gardens** is an award winning, 20-acre non-profit botanic garden, home to many dramatic and themed gardens. Some have an international focus, such as the Japanese and English Cottage gardens, while others are less formally-structured, such as the children's garden. In December, the Gardens presents the spectacular **Holiday Light Show**.

Come Inside

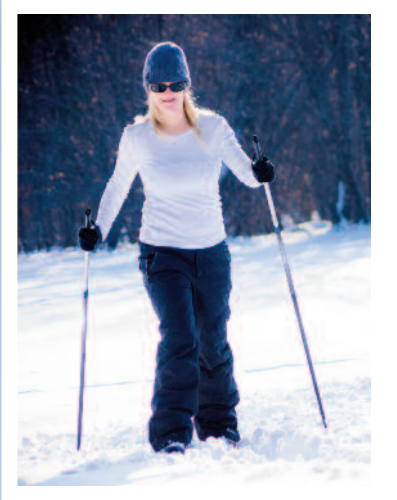
The **Janesville Performing Arts Center's** 633 seat theatre also includes a lobby, art gallery and black box theatre, is located in the former historic Janesville High School and features national, regional and local talent. Janesville has a rich history with many buildings of historical interest and 13 historic districts. The **Rock County Historical Society's Lincoln-Tallman House** is one of the many Janesville buildings listed on the National Register of Historic Places and tours of the Lincoln-Tallman House are available. The Rock County Historical Society serves as a resource for historical research, thought-provoking programming, and one-of-a-kind historic sites. For edge of your seat action catch the **Janesville Jets**, a Junior A hockey team, with exciting home games played at the Janesville Ice Arena.

Downtown Janesville

Janesville's vibrant downtown is filled with opportunities for fun, exploration, and discovery. It is rapidly becoming a dining and shopping destination. The scenic Town Square and Festival Streets area is the hub of downtown and is the location of many of Janesville's events. It features the Blain-Gilbertson Heritage Bridge, a lighted pedestrian bridge that offers scenic views at every turn and an interactive water feature, The Bubbler.

Art Infusion

The Janesville Area Convention & Visitors Bureau's Art Infusion event (held annually in September) features a sidewalk chalk competition, and the installation of other pieces of art including large-scale painted murals.



©FULL SPECTRUM PHOTOGRAPHY

Winter encourages participants to experience Janesville's extensive park system while sledding, cross-country skiing, skating or ice fishing.



©FULL SPECTRUM PHOTOGRAPHY

The pedestrian bridge in downtown Janesville connects both sides of the Town Square.



©PAT SPARLING PHOTOGRAPHY

Downtown Janesville restaurants like **Sandwich Bar**, provide a wide variety of dining and entertainment options.



Music at the Marv in Courthouse Park showcases musicians of various genres during lazy summer afternoons and evenings.

JANESVILLE AREA MAP

Janesville Map Key

- 1 Blackhawk Golf Course
- 2 **drafthouse**
- 3 Festival Street - Town Square and Janesville Farmers Market
- 4 Genisa
- 5 The Glass Garden, LLC
- 6 Janesville Performing Arts Center
- 7 Janesville Area CVB
- 8 Lincoln-Tallman House
- 9 Mercyhealth
- 10 O'Riley-Conways Irish Pub
- 11 Raven's Wish
- 12 Riverside Golf Course
- 13 Rock Aqua Jays Ski Team
- 14 Rock County Fairgrounds
- 15 Rotary Botanical Gardens
- 16 ShoreWest Realty
- 17 UW-Whitewater - Rock County



Sore throat?
Feel better fast.

Two convenient locations

Mercyhealth Urgent Care–North
3400 Deerfield Dr.
Janesville
(608) 314-3600

Mercyhealth Urgent Care–East
3524 E. Milwaukee St.
Janesville
(608) 756-8484



Downtown Janesville hosts several yearly outdoor events including the Farmers' Market, Wine Walk, Tour of America's Dairyland Janesville Town Square Gran Prix Bike Race, and Art Infusion.

Downtown Janesville



Raven's WISH LLC
Gallery / Studio

POTTERY - GLASS -
TEXTILES - SCULPTURE
JEWELRY - PAINTING

101 W. Milwaukee Street, Janesville
www.ravenswish.com -- 608-757-2622

dh drafthouse

101 E Milwaukee St
608-563-1856

The Glass Garden, LLC

Stained glass panels, lamps, candleholders, bowls, fused glassware and a complete selection of supplies.

Tues. - Fri. 10 - 5:00 Wed. til 7:00, Sat. 10 - 2
25 W. Milwaukee St. www.eglassgarden.com
(608)754-3718

Genisa

Wine Bar Open 3pm Daily
Open Mondays for Special Events Only
GenisaWineBar.com
11 N. Main St. 608-728-7964

O'Riley & Conway's

Irish Pub — Bar & Grill

- 54 Beers on Tap, over 100 total
- House Wines & Scotch List
- Party Bookings

Fantastic menu featuring traditional Irish fare, the freshest wild caught seafood, belt busting burgers and sandwiches and even a great Irish breakfast!

608-752-6099 • 214 W. Milwaukee
Mon-Sun 11am-2am
www.orileyconwaysirishpub.com



Milton *A Community Since 1838*

Welcome to Milton

We invite you to discover our history, hike and bike our wooded trails, boat and fish our lakes, taste a new wine or two, dine at a local supper club or old-fashioned pub, shop one of our boutiques or attend a fun event! Milton is steeped in history and unique opportunities for visitors. It is a friendly, engaging and delightful small town with interesting historic attractions, natural beauty, and charming shops, restaurants and wineries nestled in the center of scenic southern Wisconsin.

Historic Adventures

Walk through the **Milton College Historic District**, where former college buildings constructed in the mid-1800s are still intact and have taken on new life. **Main Hall Museum**, a focal point of the former campus, is keeping the spirit of Milton College alive through self-guided tours of the college's history. Traveling one mile west, you will find the "Junction" that developed with the railroad during the late 1850s, thus giving Milton two distinct business districts that afford today's travelers the opportunity to experience a variety of specialty shopping. Tour the **National Historic Landmark Milton House Museum**, an 1844 stagecoach inn and authenticated stop on the **Underground Railroad** that sheltered men and women on their path to freedom from slavery. On this tour, walk the very path of history as you travel through the same secret passageway that ushered freedom seekers to shelter on the Underground Railroad. Attend the **Civil War Living History Days** held annually in May to explore the soldiers' encampment and Underground Railroad, meet Abraham Lincoln, view cannon demonstrations, and more.

Outdoor Fun

Whether you like to hike, bike, backpack, kayak, fish, swim, snowshoe, or snowmobile, you'll find plenty of opportunities to appreciate the natural beauty of the outdoors found along Milton's segment of the **National Scenic Ice Age Trail, Glacial River Trail or Rock River Trail**. If you prefer swimming, boating or fishing, plan to visit Milton's **Clear Lake, Storrs Lake or Lake Koshkonong**. If it's a leisurely stroll, picnic or fun playground for the kids you're looking for, plan to visit **Crossridge Park**. If you're hoping to get in a round of disc golf check out **King Park Disc Golf Course & Sledding Hill**. **Schilberg Park** also offers a fun playground and sports fields. There's lots of fun for the kiddos at the **Goodrich Square Splash Pad** and Fido will love getting out to enjoy the 15+ acres of doggie delight at **Tails n Trails Dog Park**.

Sip, Shop & Dine

Relax and enjoy! Milton is home to three unique wineries, **Northleaf Winery, Timber Hill Winery** and nearby **Fermenting Cellars**, where you can explore tastings, special activities and a variety of events.

For the latest fashion, furnishings, fabric and decor, shop Milton's charming shops and boutiques like **Hattie & Elsie, Pena Jenta Boutique**, and **Sunny + Olive**. Discover top notch dining options when you visit **Buckhorn Supper Club, Frederick's Supper Club, Lakeview or Anchor**.



Year-Round Activities

A variety of fun activities and events are featured year-round in Milton. To see highlights, follow Visit Milton on Facebook, Instagram and Pinterest.

See pages 4-7 for more information on:

- The Milton House Museum Historic Site
- Milton College Historic District

Milton Events

May - Civil War Living History Days, Milton House Museum

June - Concert on the Lawn, The Gathering Place

July - 4th of July Celebration
Concert on the Lawn, The Gathering Place

August - Pork Roast, North Goodrich Park
Concert on the Lawn, The Gathering Place

September - Twilight Tours, Milton House Museum

October - Halloween Events in the community
Milton House Museum
Wine Hop
Pumpkin Fest, The Gathering Place

December - MACC Christmas Walk
Performance of *A Christmas Carol*, Milton House Museum
Hotdogs with Santa, The Gathering Place

~THE OLD JUNCTION MILL~

613 W. Madison Ave., Milton, WI www.oldjunctionmill.com

The Red Rooster Home Furnishings & Gifts

A modern country shop on the main level of The Old Junction Mill, a beautifully renovated feed mill dating back to the 1850's.

We offer fresh new looks for each season, candles, inspirational items, textiles, signs, wall art, jewelry and other unique gifts and home décor. Join us on Facebook!

Tues.-Sat. 10-5, Sun. 12-4
608-868-5555

Anew Vintage Dream

A collaborative, create studio specializing in DIY workshops and supplies, pop-ups and branding. Check out our website for upcoming events or to book a private workshop. Rent out "The Loft" for specialized events and photography.

Retail Hours:

Thurs-Sat 10-4 Sun 11-2

Contact us at: 608-423-2253

anewvintagedream.com

facebook.com/anewvintagedream

instagram.com/anewvintagedream/



Join us on Facebook



Peddlers Loft & Cellar

Peddlers Loft & Cellar, located on the upper and lower levels, features over 45+ local vendors showcasing their wares.

From antiques to handcrafted jewelry, candles, cards, wood and repurposed items, collectibles and other one-of-a-kind items, there is something for everyone.

Tues.-Sat. 10-5, Sun. 12-4
608-868-5555



NICODEMUS NIEMMO

BEN BORGERING



Experience & Share

- Community Events
- Specialty Shopping
- Wine Tasting
- Fine Dining
- Challenging Golf
- Antiquing
- Four Lakes
- Scenic Hiking
- History Museums

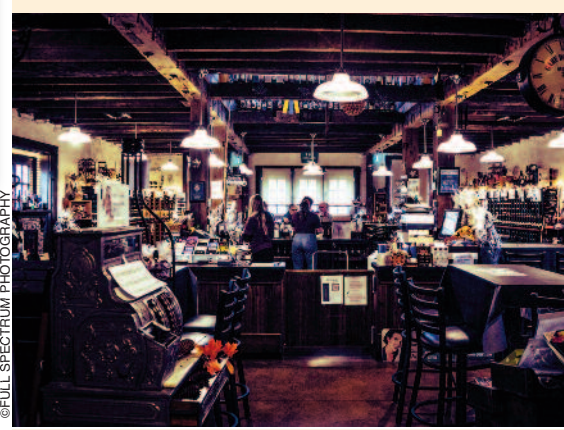


©FULL SPECTRUM PHOTOGRAPHY



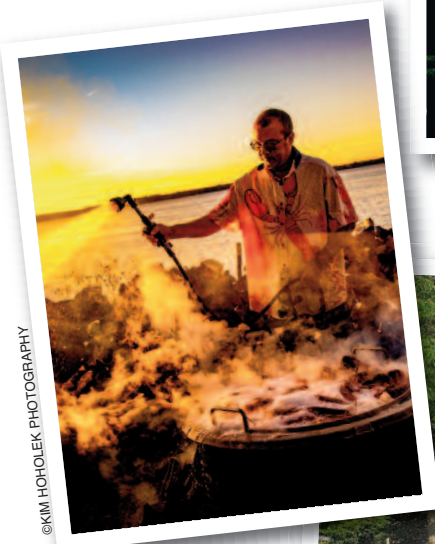
©FULL SPECTRUM PHOTOGRAPHY

Milton celebrates the Annual MACC Pork Roast and Annual Fourth of July Celebration.



©FULL SPECTRUM PHOTOGRAPHY

Northleaf Winery offers a Taproom, Guesthouse and event space.



©KIM HOHOLEK PHOTOGRAPHY



©KIM HOHOLEK PHOTOGRAPHY



For the latest fashion, furnishings, fabrics, decor and more, shop Milton's boutiques and shops. Pictured: The Red Rooster



©KIM HOHOLEK PHOTOGRAPHY

Northleaf Winery, Timber Hill Winery and Fermenting Cellars cater to wine enthusiasts by hosting special events throughout the year.



©FULL SPECTRUM PHOTOGRAPHY



MILTON PARKS & RECREATION



Storrs Lake swimming and fishing and the Nature Preserve's hiking, snowshoeing / x-country ski trails inspire four-season fun.



ERIC PANICO



MILTON PARKS & REC

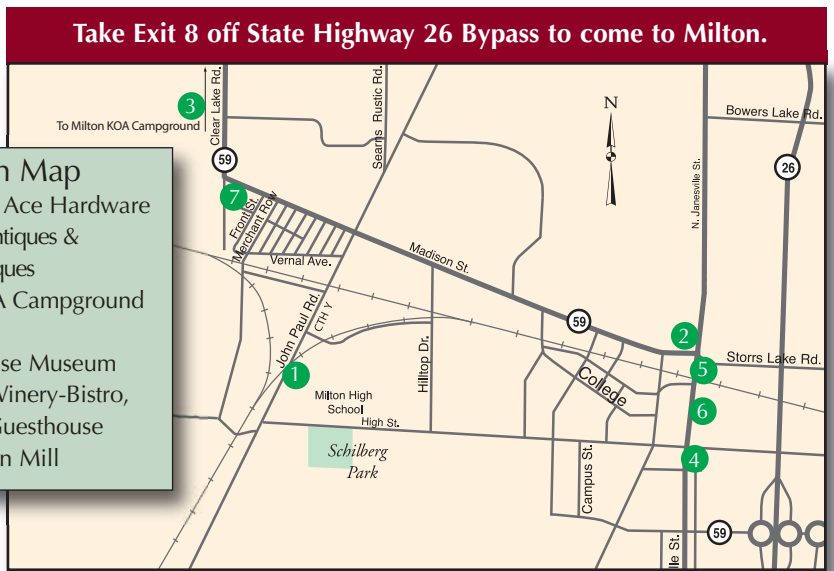


laPHOTO

Three wineries, cooling off at the splash pad or Storrs Lake, shopping, or enjoying a festival can fill an entire day in Milton.



©KIM HOHOLEK PHOTOGRAPHY



- Milton Map**
- 1 Hometown Ace Hardware
 - 2 Goodrich Antiques & Vintage Uniques
 - 3 Milton KOA Campground
 - 4 MACC
 - 5 Milton House Museum
 - 6 Northleaf Winery-Bistro, Market & Guesthouse
 - 7 Old Junction Mill

Accommodations

BED & BREAKFASTS & INNS

- Cooksville Farmhouse Inn • 11203 N. State Rd. 138, Cooksville. 608-335-8375 (B)
 Emerson House • 1810 Emerson St, Beloit. 608-368-8445 (B)
 Guardian Angel B&B • 429 Prospect Ave., Janesville. 608-758-3211 (B)
 Prairie Hill Retreat • 5130 E US Hwy 14, Janesville. 608-756-9850 (No Breakfast)



LODGING KEY P - Pool, W - Whirlpool, B - Breakfast, R - Restaurant

RATE KEY (\$) - The lodging rate is for Standard/Double Room.

Rates are subject to change without notice.

\$ - under \$60; \$\$ - \$60-75; \$\$\$ - \$75-100; \$\$\$\$ - \$100+

EDGERTON AREA: HOTEL/MOTEL

- Coachman's Golf Resort • 984 Cty. Rd. A 608-884-8484 (P,W,B, R) \$\$-\$\$\$
 Quality Inn • I-90 & Hwy 59 608-884-2118 or 800-4-CHOICE (P,W,B) \$-\$\$
 Town Edge Motel • 1104 N. Main 608-884-9328 \$

EVANSVILLE: HOTEL, RETREAT CENTER

- Boarders Inn & Suites by Cobblestone 715 Brown School Rd. 608-882-0936 or 888-693-8262 (B,W) \$\$-\$\$\$
 The Grove Guesthouse, 8 S. Madison St. 608-290-3433 \$\$-\$\$\$\$
 The Grove Retreat (groups), 5 N. Water St. 608-412-0908. \$\$-\$\$\$

JANESVILLE: HOTEL/MOTEL

- AmericInn • I-90 & Hwy 26. 608-371-9981 or 800-634-3444 (P,W,B) \$\$-\$\$\$
 Baymont Inn • I-90 & Hwy 11. 608-758-4545 or 877-BAYMONT (P,W,B) \$-\$\$\$
 Cobblestone Hotel & Suites • 20 W. Milwaukee St. 608-757-2200 or 888-693-8262 (P,B) \$\$-\$\$\$
 Hampton Inn • I-90 & Hwy 26. 608-754-4900 or 800-HAMPTON (P,W,B) \$
 Holiday Inn Express & Conference Center • I-90 & Hwy 14. 608-756-3100 or 800-HOLIDAY (P,W,B) \$\$-\$\$\$
 Lannon Stone Motel • 1524 E. Racine St. 608-752-7441. \$
 Microtel Inn • I-90 & Hwy 14. 608-752-3121 or 888-771-7171 (B) \$-\$\$
 Motel 6 • I-90 & Hwy 26. 608-756-1742 or 800-466-8356 \$
 Northern Town Motel • 1409 Center Ave. 608-754-0248 \$
 Quality Inn • I-90 & Hwy 26. 608-754-0251 or 800-641-1000 (B). \$
 Redwood Motel • 3912 N. Hackbarth Rd. 608-756-4500 \$
 Super 8 • I-90 & Hwy 26. 608-756-2040 or 800-800-8000 \$
 TownePlace Suites by Marriott • I-90 & Hwy 14 608-898-4200 (P,B) \$\$-\$\$\$

BELOIT: HOTEL/MOTEL

- Baymont Inn & Suites • 2900 Ford St., 608-365-8680 or 888-315-2378 (B) \$\$
 Best Western Legacy Inn & Suites • 5910 Technology Dr., South Beloit. 815-389-4211 (P,W,B) \$\$\$
 Del-Mae Motel, 1850 S. Madison Rd., 608-362-8888 \$
 Driftwood Motel, 1826 Riverside Dr., 608-364-4081 \$
 Fairfield Inn & Suites • 2784 Milwaukee Rd., 608-365-2200 or 800-228-2800 (P,W,B) \$\$\$
 Hampton Inn • 2700 Cranston Rd., 608-362-6000 or 800-426-7866 (P,W,B). \$\$\$
 Hilton Home2 Suites • 2750 Cranston Rd., 608-467-5500 (P,W,B) \$\$\$
 Holiday Inn Express • 3022 Ford St., 608-519-4040 (P,B) \$\$\$
 Hotel Goodwin • 500 Public Ave., 608-473-1400 (R) \$\$\$\$
 Ironworks Hotel • 500 Pleasant St., 608-362-5500 or 866-362-5507 (B,R). \$\$\$\$
 Quality Inn • 2786 Milwaukee Rd., 608-362-2666 or 800-4-CHOICE (P,W,B) \$\$
 Rodeway Inn • 2956 Milwaukee Rd., 608-364-4000 or 800-4-CHOICE (R,B) \$
 Super 8, 2790 Milwaukee Rd., 608-365-6000 \$\$\$
 Tollway Inn, 1710 Gardner St., South Beloit 815-389-2281 \$\$

Living and Working in Rock County

Situated in South Central Wisconsin, Rock County is located within the Midwestern Heartland. With a diversifying economy, appealing quality-of-life standards and excellent natural amenities, Rock County is the ideal place to live and work.

To balance the interests of both business and the environment, Rock County's growth is a coordinated effort between local officials and the county's Planning, Economic and Community Development Agency. This cooperative approach protects the county's quality-of-life standards while simultaneously maintaining a favorable business climate.

The area's utility providers offer companies, and residential consumers too, affordable and reliable energy. Rock County's advanced transit network complete with air and rail service—position goods and products for immediate Midwestern market access. Personnel costs are reduced by the area's highly skilled workforce, which is supported by Beloit College, Blackhawk Technical College and UW-Whitewater at Rock County.

Combined, these characteristics create a very competitive business climate that offers companies operating costs considerably lower than larger, metropolitan areas. Contact the Economic Development Agency to learn more about the advantages and opportunities of living and working in Rock County.



Rock County Economic Development Agency
 51 S. Main St. Janesville, WI 53545
 608-757-5598
 www.rockcountyalliance.com



ADRONEPHOTOGRAPHYWI.COM



DENNIS McDOUGALL

Fall Flavors

Wisconsin's Front Porch offers a place to... Gather friends and family. Share a day of treasure hunting for antiques or a smile as you spy the perfect pumpkin. Connect as you hike through a tapestry of color or savor a moment together at a local café. Rock County is your key to memorable fall getaways.

Fall Orchards & Pumpkin Farms

Savor these beautiful fall days before winter arrives with a stop at an orchard or pumpkin farm. Pick a treat to devour now and another to take home so you can enjoy the flavor a little longer.

BELOIT

Apple Hut 1718 Walters Rd., Beloit. 362-1961
Open daily 9 am - 5 pm, Aug.-Nov.
Directions: Hwy 81 West to Hwy 51 North; take Townline Rd. West to Walters Rd., turn left.

CLINTON

Wheel-in Pumpkin Patch 7017 S. Carvers Rock Rd., Clinton 608-774-4668

EDGERTON

Hemanson's Pumpkin Patch 127 County N, Edgerton. 608-884-8759. Open Sept. 20 - Halloween. Daily 9-6 pm.
Directions: 3 1/2 miles N. of hospital on County N.

EVANSVILLE

Viney Farms, Inc. Hwy 59 East of Evansville. 888-245-1485. Open 11 am - 5 pm thru Nov.

Boo's Pumpkin Patch 12411 W. County Trunk M, 608-882-6699 Open October

JANESVILLE

Skelly's Farm Market 2344 Hayner Rd., Janesville. 608-757-1200. Open 9 am- 6 pm daily. www.skellysfarmmarket.com
Directions: Rockport Rd. West to Hayner Rd. South.

MILTON

Meyer's Farm Market 1329 M-H Townline Rd., Milton. 608-754-0247. Open 8 am - 6 pm daily.
Directions: South of Milton on HWY 26 to M-H Townline Rd., turn right.

Hawk's Orchard 9034 N Serns Rd. Milton. 608-247-6301. Open Sat & Sun 10am-4pm Sept & Oct. Directions: North of Milton on John Paul Rd., keep left onto Serns Rd.



Rustic Roads

Serns Rd. between County N and John Paul Rd., North of Milton, traverses picturesque and gently rolling agricultural terrain.

Riley Rd. intersects with Hwy 14 West of Janesville and runs North to County Line Rd. as it passes through woodlands, rolling meadows and lowland marshes.



Markets and orchards produce a variety of farm to table products from apples to zucchini.



Fall Festivals

Rock River Thresheree Sept. 2-5 Labor Day Weekend. Celebrate the steam engine's contribution to rail travel and farming, Hwy 51, Edgerton, 888-876-8528 www.thresheree.org

Beckman Mill Heritage Sunday - Sept. 10, 11am-4pm Historic Demonstrators with a patriotic theme, Food, classic cars, Mill Road Band. Beckman Mill County Park 11600 Highway H Beloit, WI. 608-751-1551

Chilimania - Sept.9-10, downtown Edgerton, Noon-11 pm, Edgerton, 608-884-3858 www.chilimania.com

Autorama - Sept.17, Town of Beloit Preservation Park, Hwy. 51, Beloit. Annual car show, swap meet. beloitautorama.com

Dragons on the Rock Sept.17 9am-8pm, Traxler Park, Janesville, kanduindustries.com/dragons, 608-755-4123

Art Infusion - Sept. TBD Downtown Janesville, 608-757-3171

Oktoberfest - Sept.23, Downtown Beloit

Friends of Carver Roehl County Park Fall Fest - Sept. 2 Food, music, bake sale, wagon rides and more.

Halloween Party & Celebration - Oct. 28, 10 am-2 pm, 608-365-0150, downtownbeloit.com.

Pumpkin Fest - Oct. 2, Milton



VISIT BELOIT & THEIR TOURISM PARTNERS

Farmers Markets

Beloit Farmers Market

May-October, Saturdays, 8 am- 1 pm
State Street & Grand Ave., 608-365-0150
www.downtownbeloit.com

Edgerton's Farmers Market

May-October, Thursdays, 2-6 pm, 608-921-1601
www.edgertonchamber.com

Janesville Farmers Market

May-October, Saturdays 8 am - 1 pm
Main Street in Downtown Janesville, 608-758-9359
www.janesvillefarmersmarket.com

Rock County Farmers Market

May-October, Sundays, 8 am - 1 pm
5013 Hwy 11 West, 608-314-6721
www.rockcountyfarmersmarket.com

Memories from the Front Porch

Our peak time for fall color viewing usually occurs mid to late October. We suggest you explore these roads for a peek of fall as you roam through Rock County and see the Rock County map on pages 18-19 to wander on your own. Along the way you'll discover historic homes to stroll by, antique shops to enjoy and roadside cafe's for a refreshing break.

- Highway 51 along the Rock River from Beloit to Janesville
- County Hwy D from Beloit to Afton with panoramic views at Big Hill Park
- Creek Rd. East of Beloit to the county line
- County Hwy F North of Hwy 14 between Janesville and Edgerton
- Maple-lined streets in historic Evansville
- Old growth maples on the former Milton College Campus in Milton



JAN PENSINGER

Springtime Sweetness

Savor the sweetness of Spring in Rock County. There's no better way to shake off winter than picking your own berries and discovering the first fruits and flowers of spring.

Berry Picking

Meyer's Farm Market
1329 E. M-H Townline Rd.
Milton, WI 53563
608-754-0247
meyersfarmmarket.com

Skelly's Farm Market
2344 Hayner Rd.
Janesville, WI 53548
608-757-1200
skellysfarmmarket.com



Spring Festivals

**Rotary Botanical Gardens
Bulb Displays**
April - June
608-752-3885
rotarybotanicalgardens.org

Evansville Art Crawl
May
evansvillechamber.org

Snowmobiling

Snowmobile routes wind throughout Rock County's countryside and are maintained by various snowmobiling clubs. Check the Wisconsin Department of Tourism website at: www.travelwisconsin.com for detailed information on trail conditions, or call 608-757-5458.

Download Rock County snowmobile map at www.co.rock.wi.us/parks
Wisconsin Snow Condition Report: www.travelwisconsin.com

Some suggested access points are:

- Clinton or Pelishek-Tiffany Nature Trail, Park and ride location, Clinton Fence Hoppers, 10740 Cty. X, Clinton.
- Indianford at County F & County M
- Janesville - City Hwy 14 North
- Newville at Charley Bluff Boat Landing

Winter's Wonder

Southern Wisconsin's traditional snowfall levels and moderate temperatures are just two of the main reasons to consider spending time in Rock County during the winter months.

Whether you're a snowmobile or cross country skiing enthusiast, or simply someone who enjoys Mother Nature's picturesque frosted landscapes, Rock County offers a variety of winter related activities.

For those seeking to enjoy the lighter side of the winter months, come experience the holiday spirit at any number of local community events and attractions. Themed holiday walks through historic districts, nationally and/or internationally recognized landmarks are sure to rekindle pleasant memories with family and friends alike. Last minute holiday shoppers will be pleasantly surprised at the unique gift selection available from the specialty and antique vendors operating throughout the County. After working the trails or strolling through our quaint communities, don't forget to complete your day by attending a musical or theatrical performance.

To plan your daily or weekend winter activities, please refer to the **Calendar of Events** on page 8-11 and the **County Map** on pages 18-19.

Snowshoe Rental

Want to try snowshoes before you buy them? Worried if you purchase snowshoes for your children, that they will out-grow them before next year?

Rock County Parks rents snowshoes of all sizes, from youth 50 pounds to adults up to 250 pounds. Reservations must be made in advance during office hours (Mon.-Fri. from 7-4pm) with the Rock County Parks Department at 608-757-5450.

Rental Fees

- Daily (24 hours) \$12/adult pair — \$6/youth pair
- Weekend (Fri.-Mon.) \$16/adult pair — \$10/youth pair



MARGARET DARR

Ice Skating

Outdoor

- Edgerton-Central Park
- Milton-Central Park

Indoor

- Beloit - Edwards Ice Arena
- Janesville - Janesville Ice Arena

Winter Crafter & Farmers' Market

November - April 9am-12pm
557 E. Grand Ave., Beloit 608-365-0150
www.downtownbeloit.com

Cross-Country Skiing & Snowshoeing

- Check the **Trails on Land** chart on page 12 and the **County Parks** chart on page 13 for parks offering cross country ski trails.
- Municipal golf courses in some communities also offer cross country skiing, such as Riverside or Blackhawk in Janesville.
- Check out snowshoes and poles from the Beloit Public Library during library hours. Free to library card holders. www.beloitlibrary.org

Ice Fishing

Refer to the chart on page 15 for area lakes suitable for ice fishing. CAUTION: Do not ice fish on any rivers.

ROAD CONDITIONS 511 or www.511.com

Rock County's Largest Home Seller



Mary Adamson
608-290-1843



Ken Bach
608-295-0875



Ellen Brown
608-290-2144



Lynne Forrestal
608-921-3031



Mary Gilbank-Peterson
608-751-5868



Jenny Hallett
608-290-6555



Mary Johnson
608-289-2386



Jeff Joseph
262-719-8901



Molly Leonard
608-728-0103



Kimberly Nickols
608-295-9056



Rhonda Oshel
608-289-9776



Barb Palmby
608-290-2935



Charla Piper
608-359-9578



Tim Piper
608-208-3921



Aaron Schoelzel
608-449-4834



Jason Sheridan
608-921-7411



Jen Skubis
608-728-3455



Lynnea Strickland
608-921-9466



Katie Stumpf
608-289-6492



Christen Valente
708-822-3886



Macy Walter
608-931-0662



Sally Weaver-Landers
608-346-0569



Karen Williams
608-751-3939



Kierra Wilson
608-201-9474



Justin Winkofsky
608-290-2665



**SCAN HERE
TO GET AN
INSTANT
HOME VALUE
ESTIMATE**

LOOKING TO BUY OR **SELL** A HOME?

Go with Rock County's trusted leader
for **OVER 75 YEARS.**
**CALL ONE OF OUR
EXPERIENCED AGENTS TODAY!**

608-754-2121 shorewest.com



Jeff Joseph
Sales Director
262-719-8901



Tom Jones
NMLS 248539
608-931-3746



If you'd like a career with unlimited earning potential
and flexibility, go to joinshorewest.com or call us.

Janesville/Rock County Office

608-754-2121

4323 Milton Avenue, Suite 200, Janesville



**WISCONSIN MORTGAGE
CORPORATION**
NMLS# 280412

**ShoreWEST
REALTORS®**